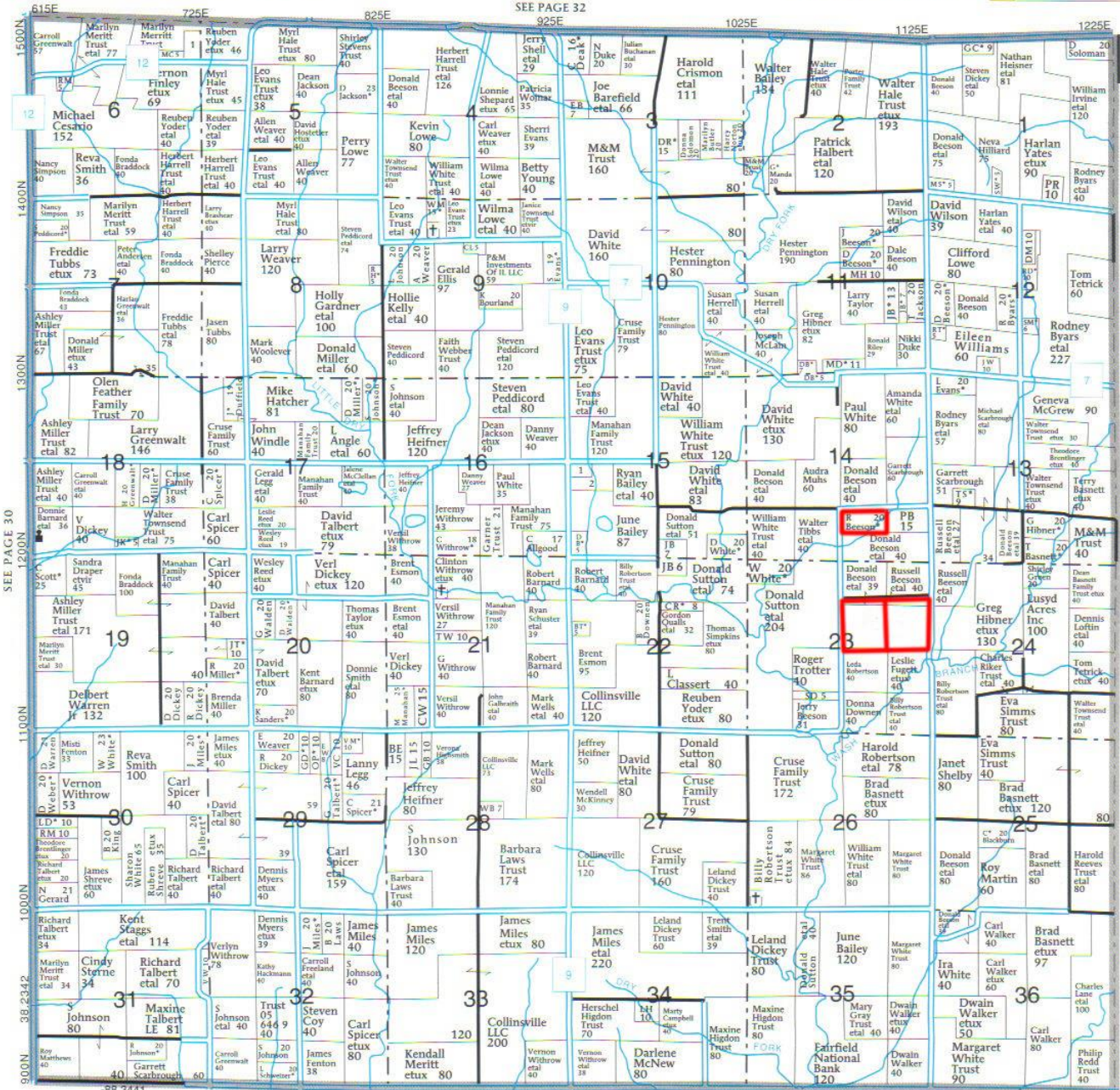
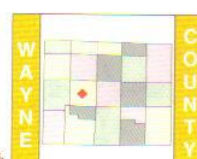




© Farm & Home Publishers, Ltd.

BERRY T-1-S • R-6-E

See Page 80 For Additional Names.



SEE PAGE 30

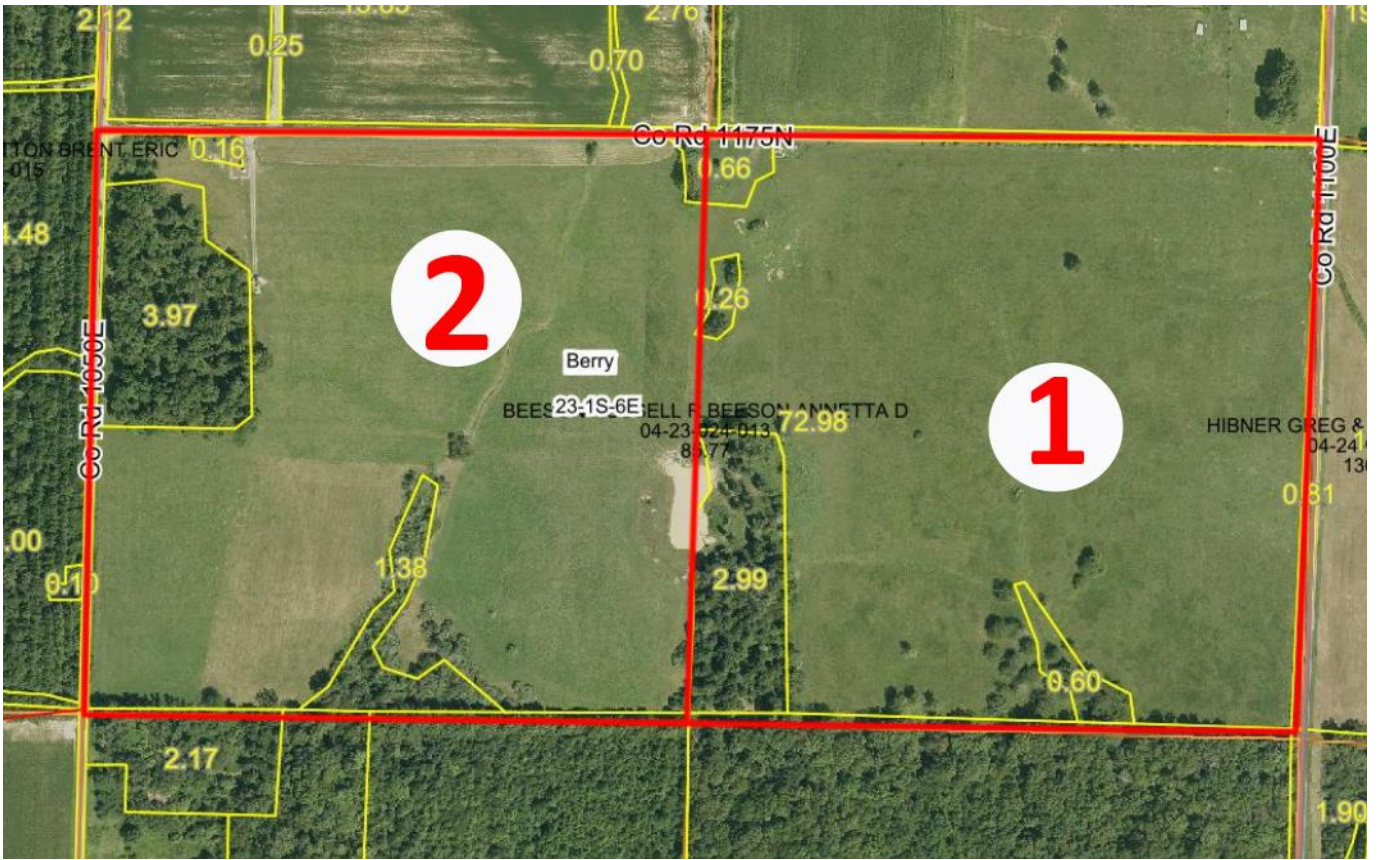
SEE PAGE 30

SEE PAGE 30

SEE PAGE 30

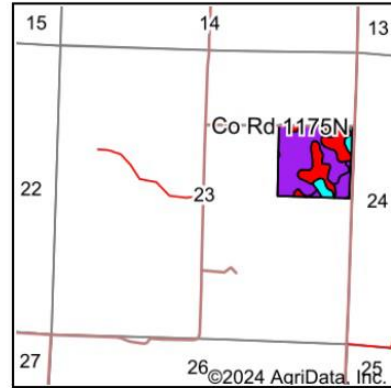
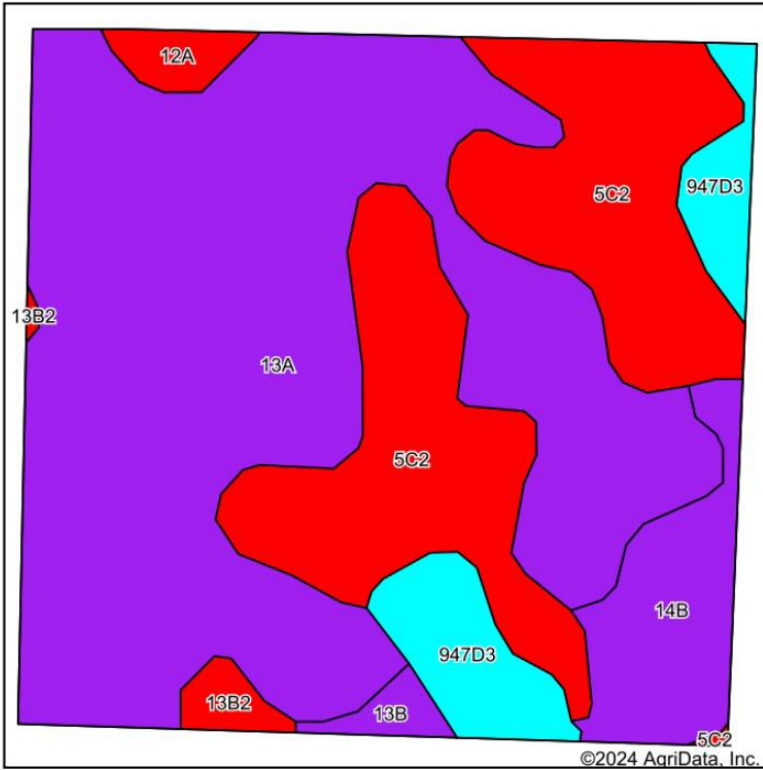
-88-3441

SEE PAGE 80



TRACT 1

Soils Map



State: **Illinois**
 County: **Wayne**
 Location: **23-1S-6E**
 Township: **Berry**
 Acres: **41.55**
 Date: **8/28/2024**



Soils data provided by USDA and NRCS.

Area Symbol: IL191, Soil Area Version: 21

Code	Soil Description	Acres	Percent of field	Il. State Productivity Index Legend	Corn Bu/A	Soybeans Bu/A	Wheat Bu/A	Crop productivity index for optimum management	*n NCCPI Soybeans
13A	Bluford silt loam, 0 to 2 percent slopes	23.27	56.0%		136	44	55	101	62
**5C2	Blair silt loam, 5 to 10 percent slopes, eroded	11.21	27.0%		**123	**40	**49	**93	64
**14B	Ava silt loam, 2 to 5 percent slopes	2.85	6.9%		**134	**44	**54	**99	55
**947D3	Hickory-Passport clay loams, 10 to 18 percent slopes, severely eroded	2.75	6.6%		**91	**31	**37	**69	40
12A	Wynoose silt loam, 0 to 2 percent slopes	0.55	1.3%		128	42	51	97	49
**13B2	Bluford silt loam, 2 to 5 percent slopes, eroded	0.50	1.2%		**129	**42	**52	**96	45
**13B	Bluford silt loam, 2 to 5 percent slopes	0.42	1.0%		**135	**44	**54	**100	62
Weighted Average					129.2	42	52	96.5	*n 60.2

Table: Optimum Crop Productivity Ratings for Illinois Soil EFOTG are sourced from Bulletin 811 calculated Map Unit Base Yield Indices, and adjusted (Adj) for slope, erosion, flooding, and surface texture. Publication Date: 02-08-2023

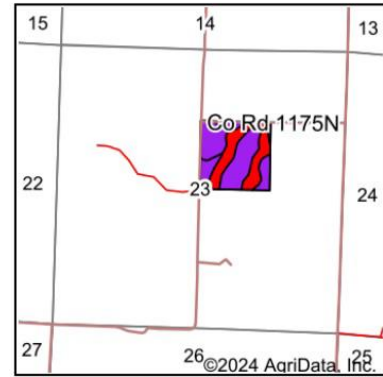
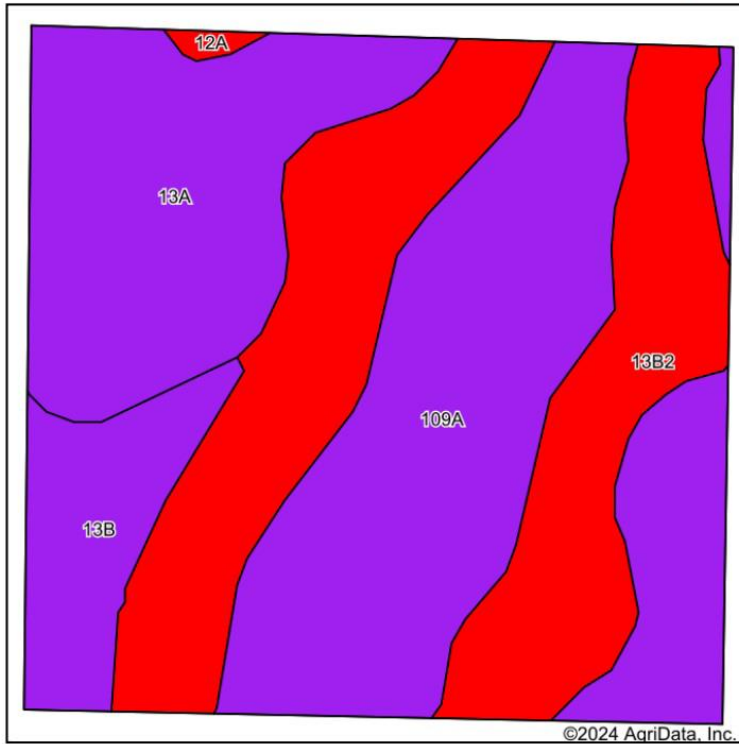
Crop yields and productivity (B811 EFOTG) are maintained at the following USDA web site: 2023 Illinois Soil Productivity and Yield Indices: <https://efotg.sc.egov.usda.gov/#/state/IL/documents/section=2&folder=52809>

** Base indexes from Bulletin 811 adjusted for slope, erosion, flooding, and surface texture according to the Il. Soils EFOTG

*n: The aggregation method is "Weighted Average using all components"

TRACT 2

Soils Map



State: **Illinois**
 County: **Wayne**
 Location: **23-1S-6E**
 Township: **Berry**
 Acres: **40.72**
 Date: **8/28/2024**



Soils data provided by USDA and NRCS.

Area Symbol: IL191, Soil Area Version: 21

Code	Soil Description	Acres	Percent of field	Il. State Productivity Index Legend	Corn Bu/A	Soybeans Bu/A	Wheat Bu/A	Crop productivity index for optimum management	*n NCCPI Soybeans
**13B2	Bluford silt loam, 2 to 5 percent slopes, eroded	13.70	33.7%		**129	**42	**52	**96	45
13A	Bluford silt loam, 0 to 2 percent slopes	12.07	29.6%		136	44	55	101	62
109A	Raccoon silt loam, 0 to 2 percent slopes	11.45	28.1%		144	46	56	106	71
**13B	Bluford silt loam, 2 to 5 percent slopes	3.33	8.2%		**135	**44	**54	**100	62
12A	Wynooose silt loam, 0 to 2 percent slopes	0.17	0.4%		128	42	51	97	49
Weighted Average					135.8	43.9	54.2	100.6	*n 58.8

Table: Optimum Crop Productivity Ratings for Illinois Soil EFOTG are sourced from Bulletin 811 calculated Map Unit Base Yield Indices, and adjusted (Adj) for slope, erosion, flooding, and surface texture. Publication Date: 02-08-2023

Crop yields and productivity (B811 EFOTG) are maintained at the following USDA web site: 2023 Illinois Soil Productivity and Yield Indices: <https://efotg.sc.egov.usda.gov/#/state/IL/documents/section=2&folder=52809>

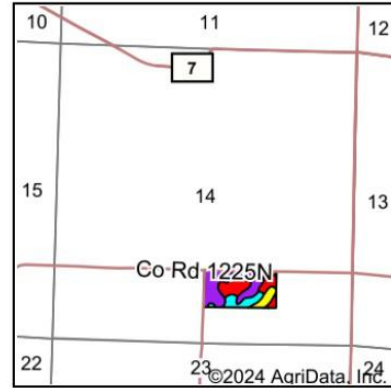
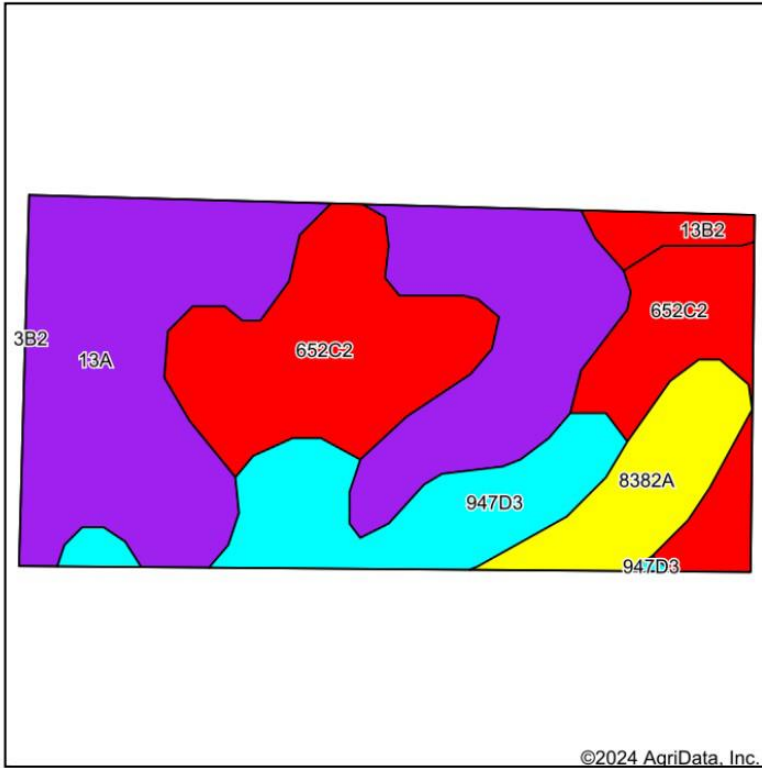
** Base indexes from Bulletin 811 adjusted for slope, erosion, flooding, and surface texture according to the Il. Soils EFOTG

*n: The aggregation method is "Weighted Average using all components"



TRACT 4

Soils Map



State: **Illinois**
 County: **Wayne**
 Location: **14-1S-6E**
 Township: **Berry**
 Acres: **20.65**
 Date: **8/28/2024**



Soils data provided by USDA and NRCS.

Area Symbol: IL191, Soil Area Version: 21

Code	Soil Description	Acres	Percent of field	Il. State Productivity Index Legend	Corn Bu/A	Soybeans Bu/A	Wheat Bu/A	Crop productivity index for optimum management	*n NCCPI Soybeans
13A	Bluford silt loam, 0 to 2 percent slopes	9.39	45.6%		136	44	55	101	62
**652C2	Passport silt loam, 5 to 10 percent slopes, eroded	6.04	29.2%		**118	**39	**52	**89	54
**947D3	Hickory-Passport clay loams, 10 to 18 percent slopes, severely eroded	2.94	14.2%		**91	**31	**37	**69	40
8382A	Belknap silt loam, 0 to 2 percent slopes, occasionally flooded	1.80	8.7%		156	52	63	117	69
**13B2	Bluford silt loam, 2 to 5 percent slopes, eroded	0.48	2.3%		**129	**42	**52	**96	45
Weighted Average					125.9	41.3	52.2	94.2	*n 56.7

Table: Optimum Crop Productivity Ratings for Illinois Soil EFOTG are sourced from Bulletin 811 calculated Map Unit Base Yield Indices, and adjusted (Adj) for slope, erosion, flooding, and surface texture. Publication Date: 02-08-2023

Crop yields and productivity (B811 EFOTG) are maintained at the following USDA web site: 2023 Illinois Soil Productivity and Yield Indices: <https://efotg.sc.egov.usda.gov/#/state/IL/documents/section=2&folder=52809>

** Base indexes from Bulletin 811 adjusted for slope, erosion, flooding, and surface texture according to the Il. Soils EFOTG

*n: The aggregation method is "Weighted Average using all components"