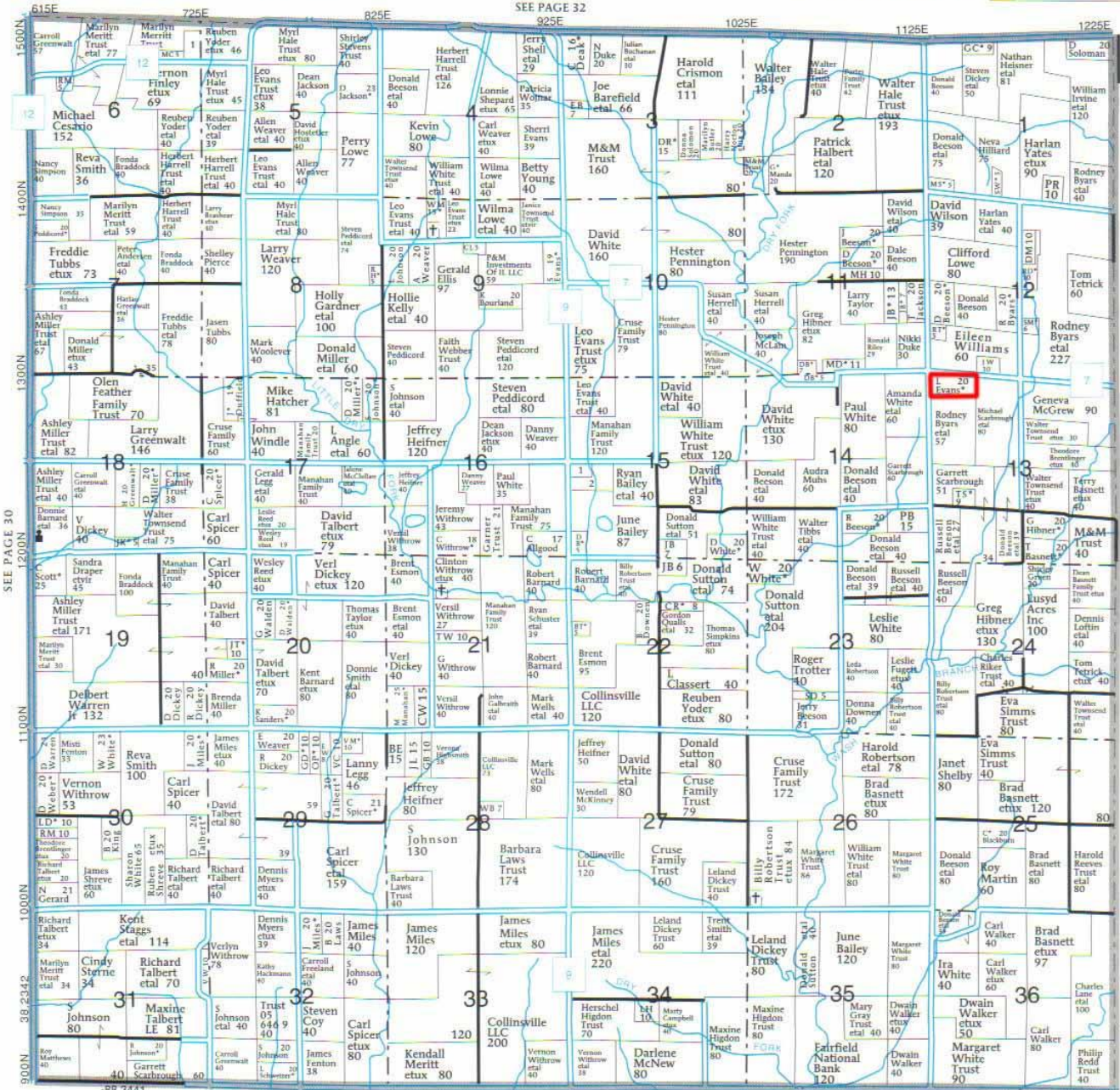
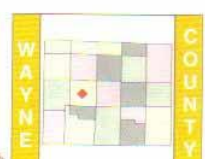


BERRY T-1-S • R-6-E

© Farm & Home Publishers, Ltd.

See Page 80 For Additional Names.



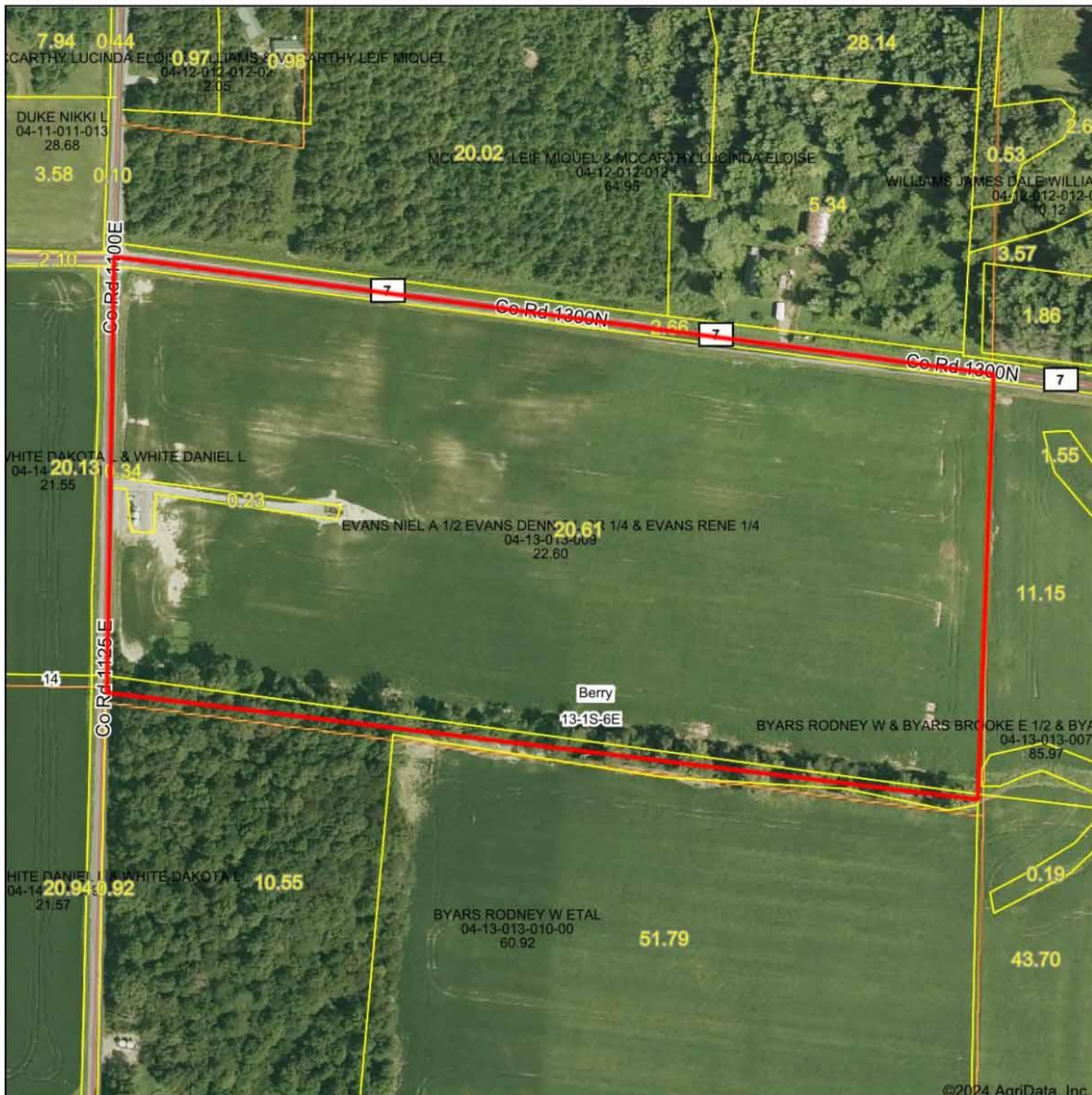
-88-3441

SEE PAGE 80

SEE PAGE 30

SEE PAGE 36

Aerial Map



©2024 AgriData, Inc.

Map Center: 38° 26' 38.36, -88° 29' 20.75



13-1S-6E
Wayne County
Illinois



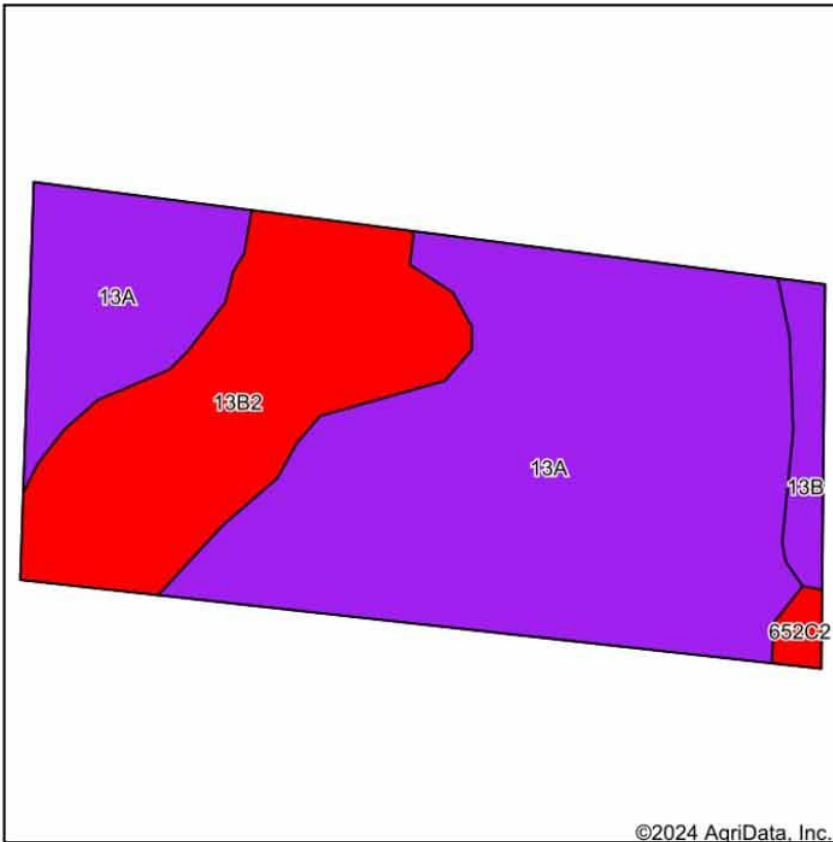
Maps Provided By:

 CUSTOMIZED ONLINE MAPPING
 © AgriData, Inc. 2023 www.AgriDataInc.com

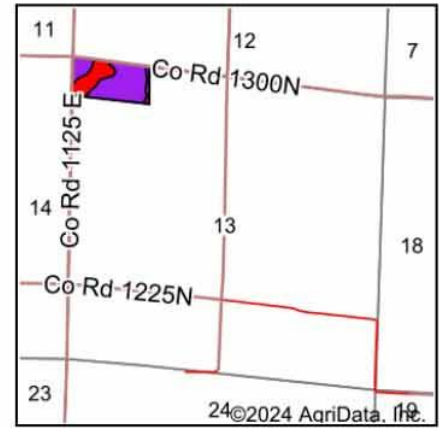
7/30/2024

Field borders provided by Farm Service Agency as of 5/21/2008.

Soils Map



Soils data provided by USDA and NRCS.



State: **Illinois**
 County: **Wayne**
 Location: **13-1S-6E**
 Township: **Berry**
 Acres: **21.84**
 Date: **7/30/2024**

Maps Provided By:

 CUSTOMIZED ONLINE MAPPING
 © AgriData, Inc. 2023 www.AgriDataInc.com



Area Symbol: IL191, Soil Area Version: 21

Code	Soil Description	Acres	Percent of field	Il. State Productivity Index Legend	Corn Bu/A	Soybeans Bu/A	Wheat Bu/A	Crop productivity index for optimum management	*n NCCPI Soybeans
13A	Bluford silt loam, 0 to 2 percent slopes	15.06	68.9%		136	44	55	101	62
**13B2	Bluford silt loam, 2 to 5 percent slopes, eroded	5.79	26.5%		**129	**42	**52	**96	45
**13B	Bluford silt loam, 2 to 5 percent slopes	0.76	3.5%		**135	**44	**54	**100	62
**652C2	Passport silt loam, 5 to 10 percent slopes, eroded	0.23	1.1%		**118	**39	**52	**89	54
Weighted Average					133.9	43.4	54.1	99.5	*n 57.4

Table: Optimum Crop Productivity Ratings for Illinois Soil EFOTG are sourced from Bulletin 811 calculated Map Unit Base Yield Indices, and adjusted (Adj) for slope, erosion, flooding, and surface texture. Publication Date: 02-08-2023

Crop yields and productivity (B811 EFOTG) are maintained at the following USDA web site: 2023 Illinois Soil Productivity and Yield Indices: <https://efotg.sc.egov.usda.gov/#/state/IL/documents/section=2&folder=52809>

** Base indexes from Bulletin 811 adjusted for slope, erosion, flooding, and surface texture according to the Il. Soils EFOTG

*n: The aggregation method is "Weighted Average using all components"