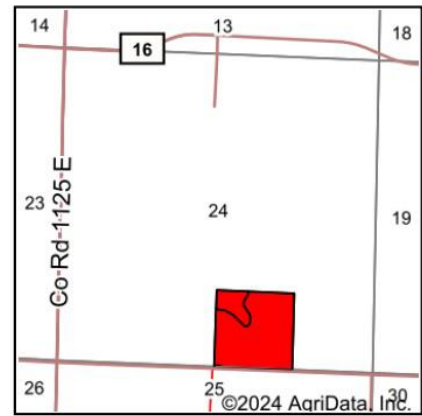
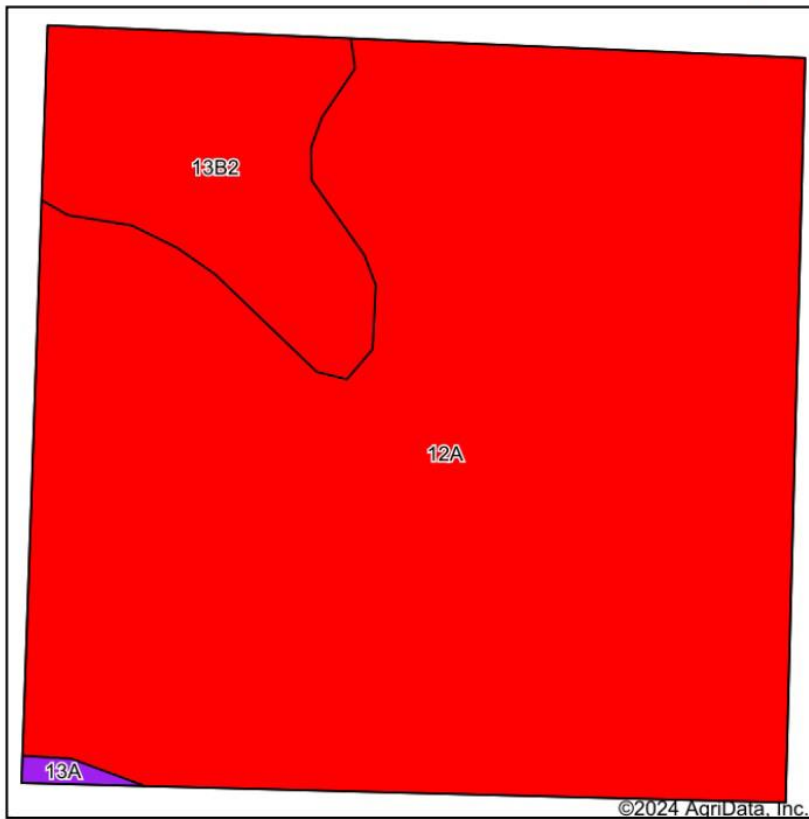


Soils Map



State: **Illinois**
 County: **Wayne**
 Location: **24-1N-6E**
 Township: **Indian Prairie**
 Acres: **40.09**
 Date: **4/29/2024**

Maps Provided By:

 CUSTOMIZED ONLINE MAPPING
 © AgriData, Inc. 2023 www.AgriDataInc.com



Soils data provided by USDA and NRCS.

Area Symbol: IL191, Soil Area Version: 21

Code	Soil Description	Acres	Percent of field	Il. State Productivity Index Legend	Corn Bu/A	Soybeans Bu/A	Wheat Bu/A	Crop productivity index for optimum management	*n NCCPI Soybeans
12A	Wynoose silt loam, 0 to 2 percent slopes	34.75	86.7%		128	42	51	97	49
**13B2	Bluford silt loam, 2 to 5 percent slopes, eroded	5.18	12.9%		**129	**42	**52	**96	45
13A	Bluford silt loam, 0 to 2 percent slopes	0.16	0.4%		136	44	55	101	62
Weighted Average					128.2	42	51.1	96.9	*n 48.5

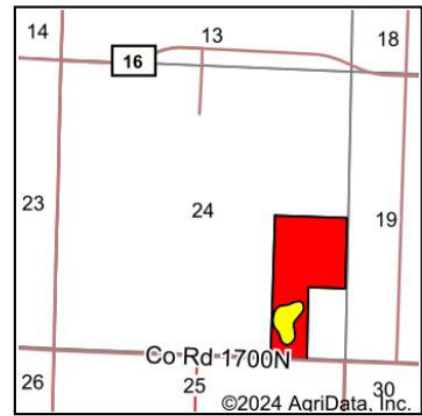
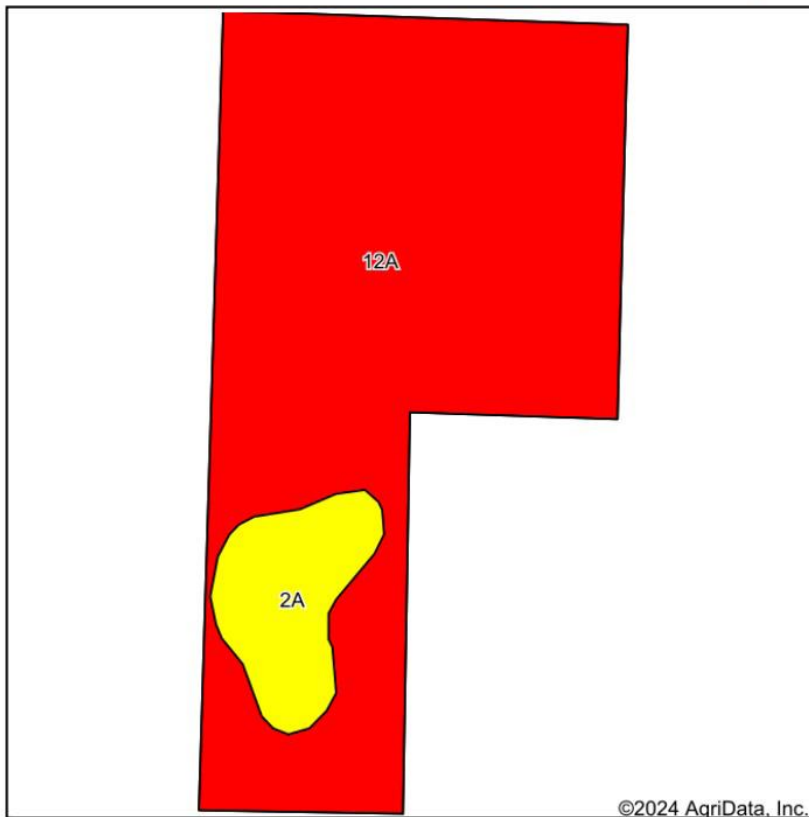
Table: Optimum Crop Productivity Ratings for Illinois Soil EFOTG are sourced from Bulletin 811 calculated Map Unit Base Yield Indices, and adjusted (Adj) for slope, erosion, flooding, and surface texture. Publication Date: 02-08-2023

Crop yields and productivity (B811 EFOTG) are maintained at the following USDA web site: 2023 Illinois Soil Productivity and Yield Indices: <https://efotg.sc.egov.usda.gov/#/state/IL/documents/section=2&folder=52809>

** Base indexes from Bulletin 811 adjusted for slope, erosion, flooding, and surface texture according to the Il. Soils EFOTG

*n: The aggregation method is "Weighted Average using all components"

Soils Map



State: **Illinois**
 County: **Wayne**
 Location: **24-1N-6E**
 Township: **Indian Prairie**
 Acres: **60.28**
 Date: **4/29/2024**

Maps Provided By:

 CUSTOMIZED ONLINE MAPPING
 © AgriData, Inc. 2023 www.AgriDataInc.com



Soils data provided by USDA and NRCS.

Area Symbol: IL191, Soil Area Version: 21									
Code	Soil Description	Acres	Percent of field	Il. State Productivity Index Legend	Corn Bu/A	Soybeans Bu/A	Wheat Bu/A	Crop productivity index for optimum management	*n NCCPI Soybeans
12A	Wynoose silt loam, 0 to 2 percent slopes	53.89	89.4%		128	42	51	97	49
2A	Cisne silt loam, 0 to 2 percent slopes	6.39	10.6%		149	46	59	109	71
Weighted Average					130.2	42.4	51.8	98.3	*n 51.3

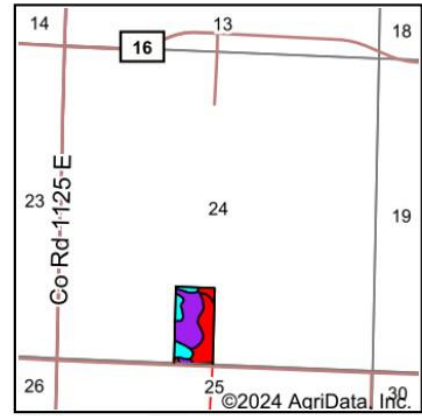
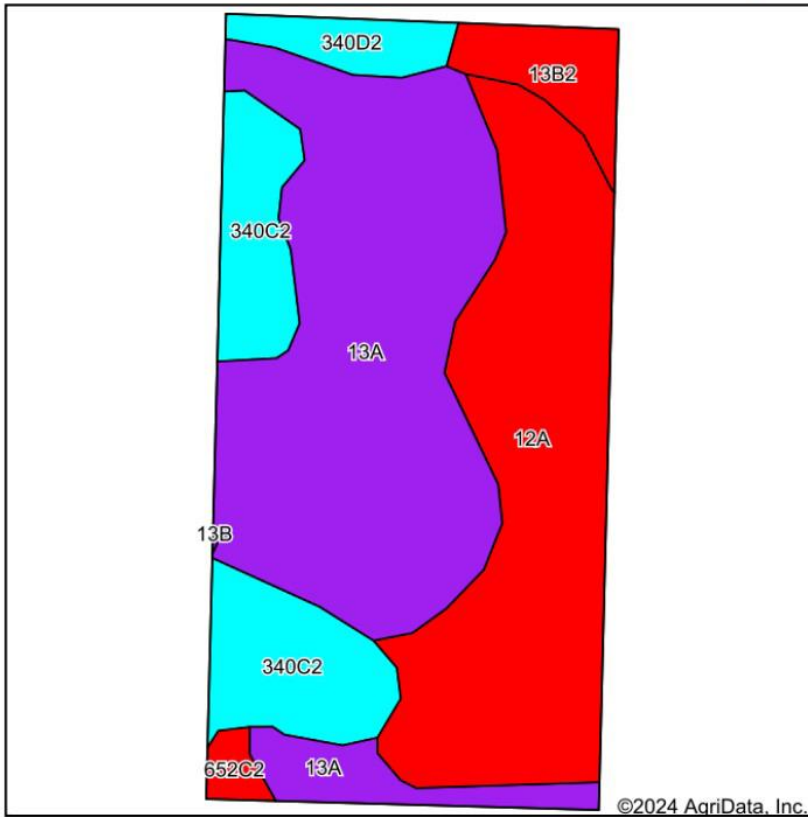
Table: Optimum Crop Productivity Ratings for Illinois Soil EFOTG are sourced from Bulletin 811 calculated Map Unit Base Yield Indices, and adjusted (Adj) for slope, erosion, flooding, and surface texture. Publication Date: 02-08-2023

Crop yields and productivity (B811 EFOTG) are maintained at the following USDA web site: 2023 Illinois Soil Productivity and Yield Indices: <https://efotg.sc.egov.usda.gov/#/state/IL/documents/section=2&folder=52809>

** Base indexes from Bulletin 811 adjusted for slope, erosion, flooding, and surface texture according to the Il. Soils EFOTG

*n: The aggregation method is "Weighted Average using all components"

Soils Map



State: **Illinois**
 County: **Wayne**
 Location: **24-1N-6E**
 Township: **Indian Prairie**
 Acres: **20.2**
 Date: **4/29/2024**

Maps Provided By:

 CUSTOMIZED ONLINE MAPPING
 © AgriData, Inc. 2023 www.AgriDataInc.com



Area Symbol: IL191, Soil Area Version: 21

Code	Soil Description	Acres	Percent of field	Il. State Productivity Index Legend	Corn Bu/A	Soybeans Bu/A	Wheat Bu/A	Crop productivity index for optimum management	*n NCCPI Soybeans
13A	Bluford silt loam, 0 to 2 percent slopes	9.00	44.6%		136	44	55	101	62
12A	Wynoose silt loam, 0 to 2 percent slopes	6.59	32.6%		128	42	51	97	49
**340C2	Zanesville silt loam, till plain, 5 to 10 percent slopes, eroded	2.83	14.0%		**110	**38	**47	**84	32
**13B2	Bluford silt loam, 2 to 5 percent slopes, eroded	0.88	4.4%		**129	**42	**52	**96	45
**340D2	Zanesville silt loam, till plain, 10 to 18 percent slopes, eroded	0.67	3.3%		**102	**35	**43	**77	29
**652C2	Passport silt loam, 5 to 10 percent slopes, eroded	0.23	1.1%		**118	**39	**52	**89	54
Weighted Average					128.1	42.1	52	96.2	*n 51.6

Table: Optimum Crop Productivity Ratings for Illinois Soil EFOTG are sourced from Bulletin 811 calculated Map Unit Base Yield Indices, and adjusted (Adj) for slope, erosion, flooding, and surface texture. Publication Date: 02-08-2023

Crop yields and productivity (B811 EFOTG) are maintained at the following USDA web site: 2023 Illinois Soil Productivity and Yield Indices: <https://efotg.sc.egov.usda.gov/#/state/IL/documents/section=2&folder=52809>

** Base indexes from Bulletin 811 adjusted for slope, erosion, flooding, and surface texture according to the Il. Soils EFOTG

*n: The aggregation method is "Weighted Average using all components"

