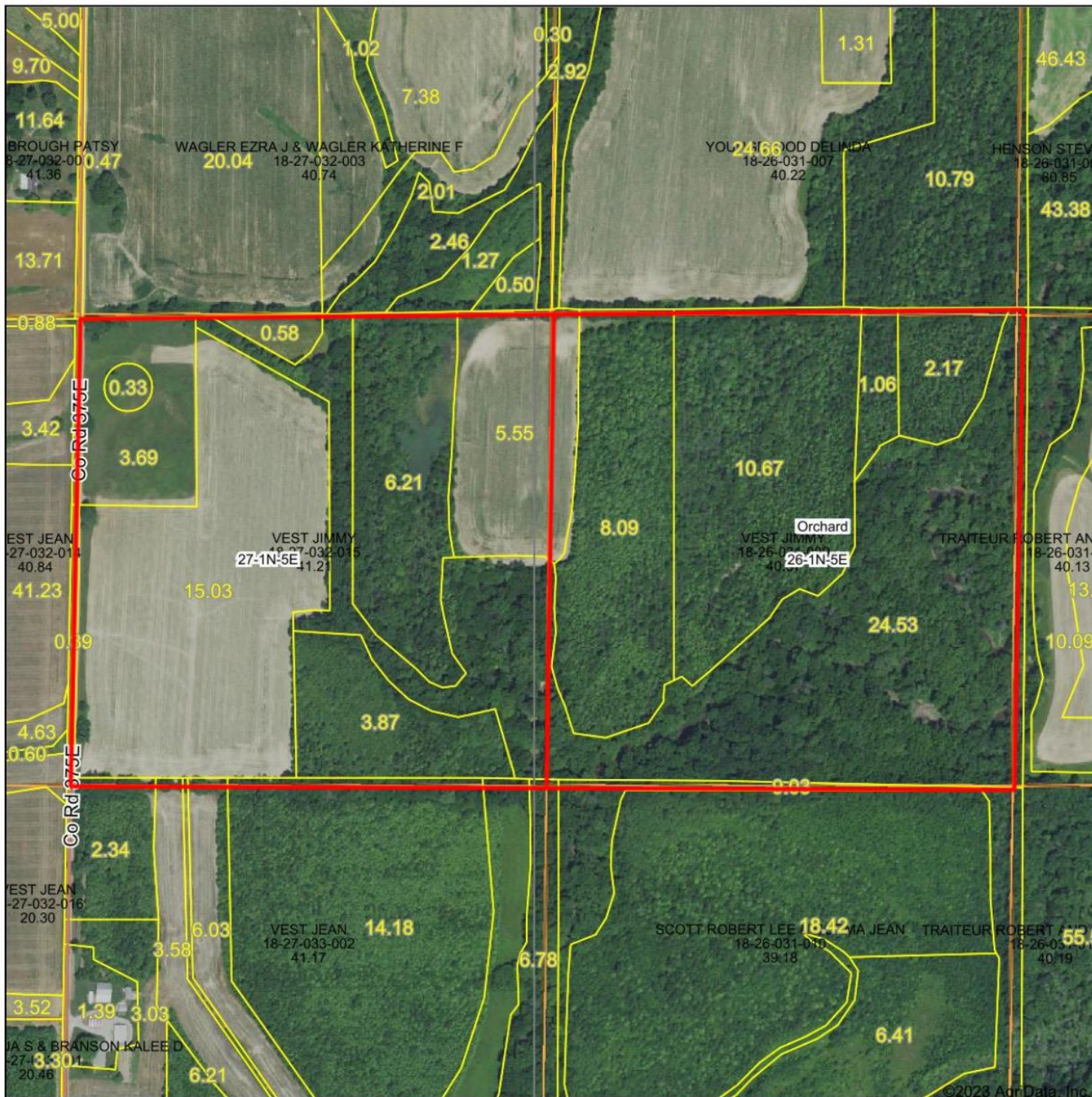


Aerial Map



Map Center: 38° 29' 46.06, -88° 37' 21.29



26-1N-5E
Wayne County
Illinois

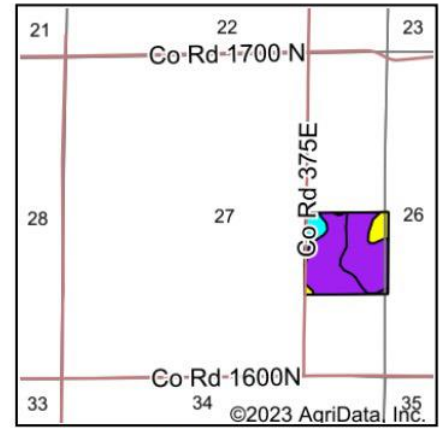
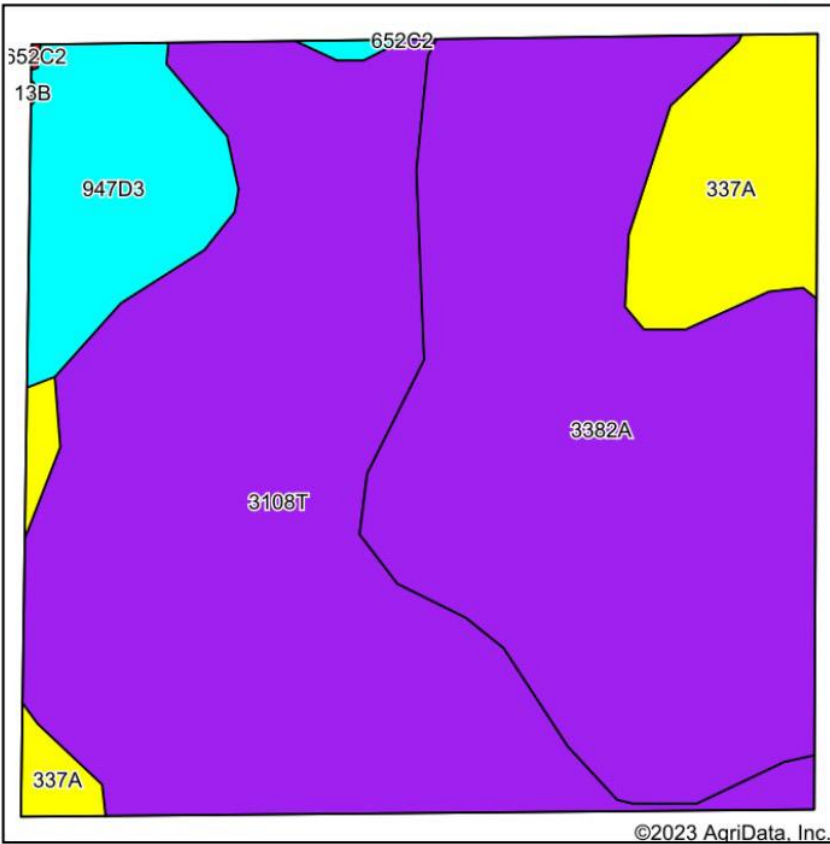
12/20/2023

Maps Provided By:

 CUSTOMIZED ONLINE MAPPING
 © AgriData, Inc. 2023 www.AgrIDataInc.com

Field borders provided by Farm Service Agency as of 5/21/2008.

Soils Map



State: **Illinois**
 County: **Wayne**
 Location: **26-1N-5E**
 Township: **Orchard**
 Acres: **42.04**
 Date: **12/20/2023**

Maps Provided By:

 CUSTOMIZED ONLINE MAPPING
 © AgriData, Inc. 2023 www.AgriDataInc.com



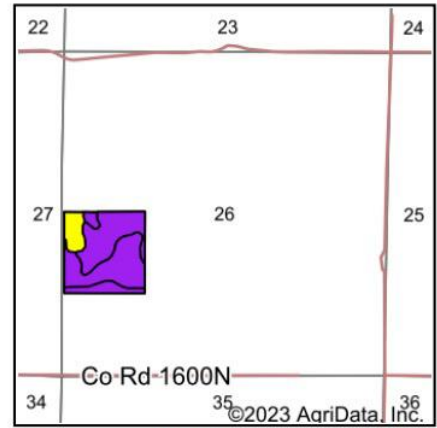
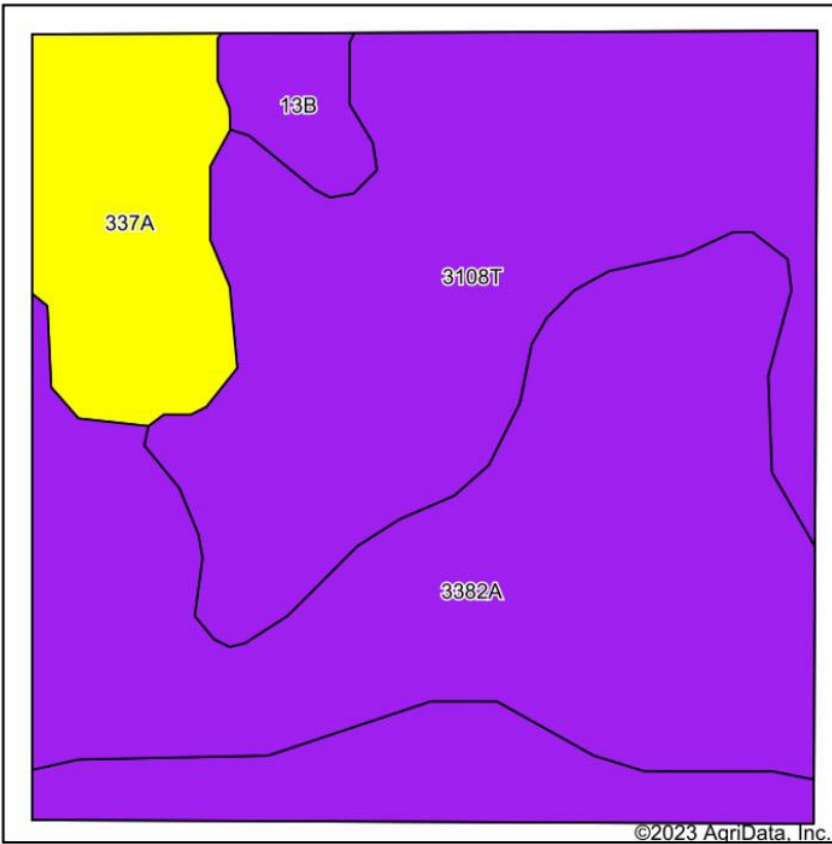
Area Symbol: IL191, Soil Area Version: 21

Code	Soil Description	Acres	Percent of field	Il. State Productivity Index Legend	Corn Bu/A	Soybeans Bu/A	Wheat Bu/A	Crop productivity index for optimum management
**3108T	Bonnie silt loam, sodic, 0 to 2 percent slopes, frequently flooded	18.36	43.7%		**134	**44	**53	**100
**3382A	Belknap silt loam, 0 to 2 percent slopes, frequently flooded	16.56	39.4%		**140	**47	**57	**105
337A	Creal silt loam, 0 to 2 percent slopes	3.66	8.7%		151	47	59	110
**947D3	Hickory-Passport clay loams, 10 to 18 percent slopes, severely eroded	3.46	8.2%		**95	**32	**40	**72
Weighted Average					134.6	44.5	54	100.5

Table: Optimum Crop Productivity Ratings for Illinois Soil EFOTG are sourced from Bulletin 811 calculated Map Unit Base Yield Indices, and adjusted (Adj) for slope, erosion, flooding, and surface texture. Publication Date: 02-08-2023

Crop yields and productivity (B811 EFOTG) are maintained at the following USDA web site: 2023 Illinois Soil Productivity and Yield Indices: <https://efotg.sc.egov.usda.gov/#/state/IL/documents/section=2&folder=52809>

Soils Map



State: **Illinois**
 County: **Wayne**
 Location: **26-1N-5E**
 Township: **Orchard**
 Acres: **40.7**
 Date: **12/20/2023**

Maps Provided By:

 CUSTOMIZED ONLINE MAPPING
 © AgriData, Inc. 2023 www.AgriDataInc.com



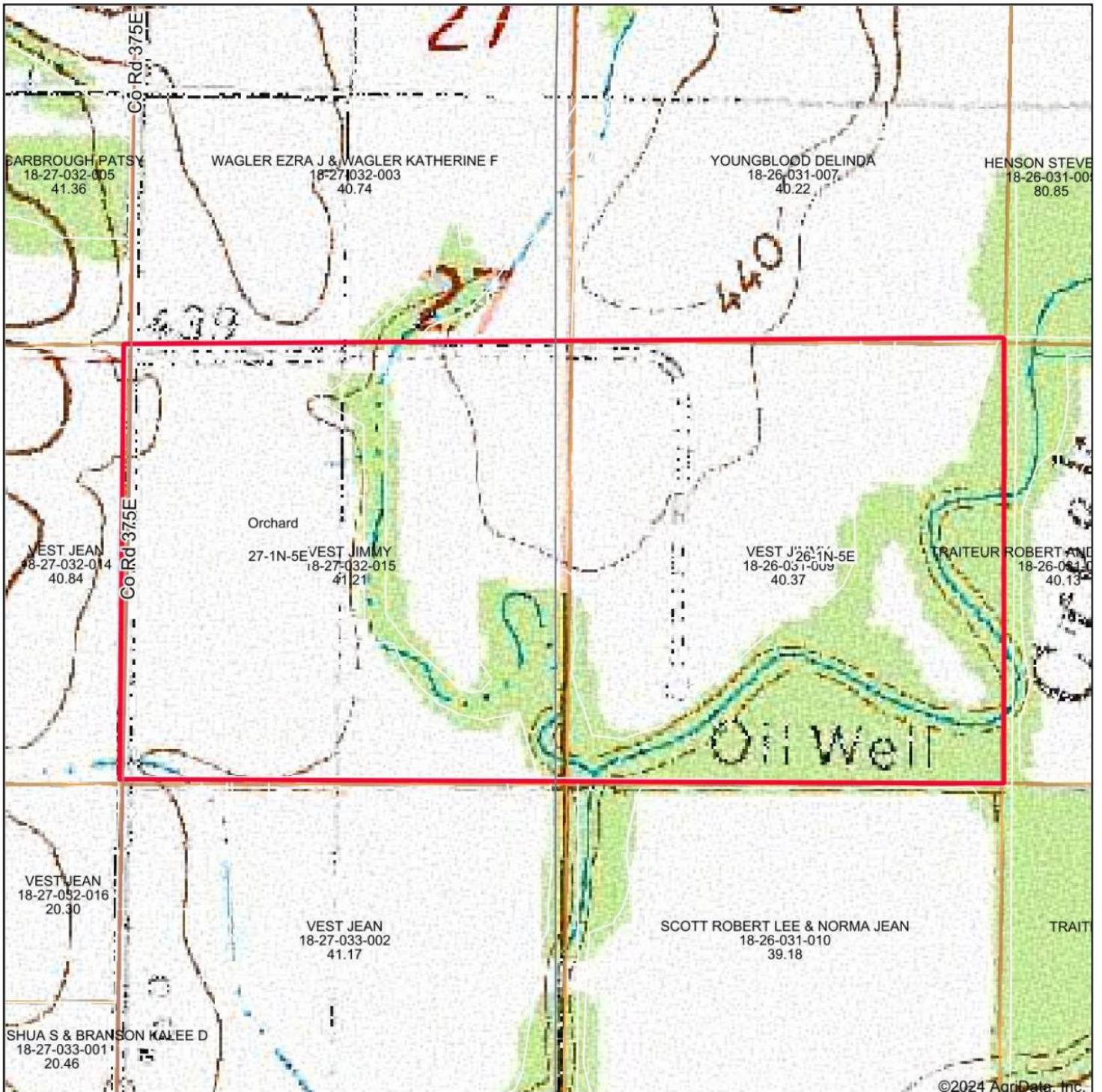
Soils data provided by USDA and NRCS.

Area Symbol: IL191, Soil Area Version: 21								
Code	Soil Description	Acres	Percent of field	Il. State Productivity Index Legend	Corn Bu/A	Soybeans Bu/A	Wheat Bu/A	Crop productivity index for optimum management
**3108T	Bonnie silt loam, sodic, 0 to 2 percent slopes, frequently flooded	18.59	45.7%		**134	**44	**53	**100
**3382A	Belknap silt loam, 0 to 2 percent slopes, frequently flooded	16.28	40.0%		**140	**47	**57	**105
337A	Creal silt loam, 0 to 2 percent slopes	4.63	11.4%		151	47	59	110
**13B	Bluford silt loam, 2 to 5 percent slopes	1.20	2.9%		**135	**44	**54	**100
Weighted Average					138.4	45.5	55.3	103.1

Table: Optimum Crop Productivity Ratings for Illinois Soil EFOTG are sourced from Bulletin 811 calculated Map Unit Base Yield Indices, and adjusted (Adj) for slope, erosion, flooding, and surface texture. Publication Date: 02-08-2023

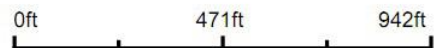
Crop yields and productivity (B811 EFOTG) are maintained at the following USDA web site: 2023 Illinois Soil Productivity and Yield Indices: <https://efotg.sc.egov.usda.gov/#/state/IL/documents/section=2&folder=52809>

Topography Map



©2024 AgriData, Inc.

Map Center: 38° 29' 46.55, -88° 37' 22.18



27-1N-5E
Wayne County
Illinois



Maps Provided By:

CUSTOMIZED ONLINE MAPPING
© AgriData, Inc. 2023 www.AgridataInc.com

Field borders provided by Farm Service Agency as of 5/21/2008.

