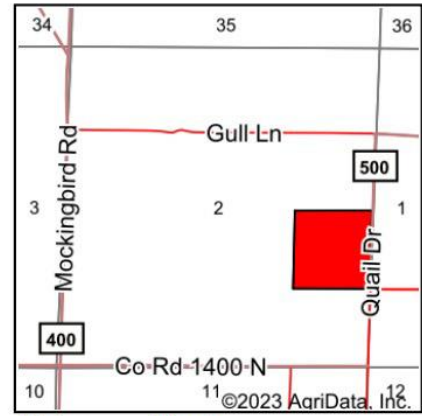
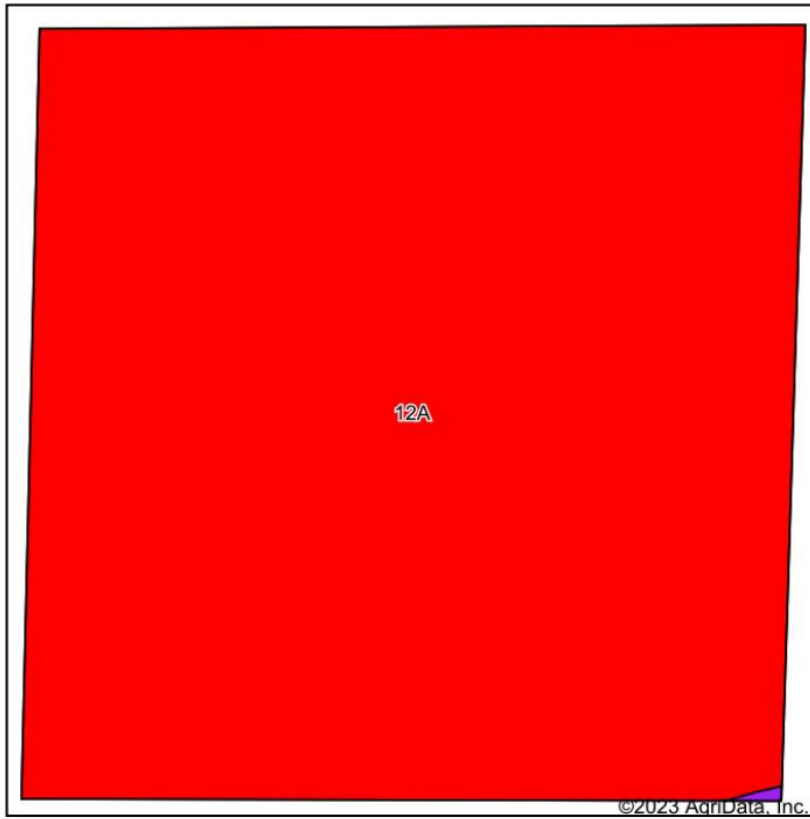




Soils Map



State: **Illinois**
 County: **Clay**
 Location: **2-4N-5E**
 Township: **Oskaloosa**
 Acres: **41.03**
 Date: **9/20/2023**

Maps Provided By:

 CUSTOMIZED ONLINE MAPPING
 © AgriData, Inc. 2023 www.AgriDataInc.com



Soils data provided by USDA and NRCS.

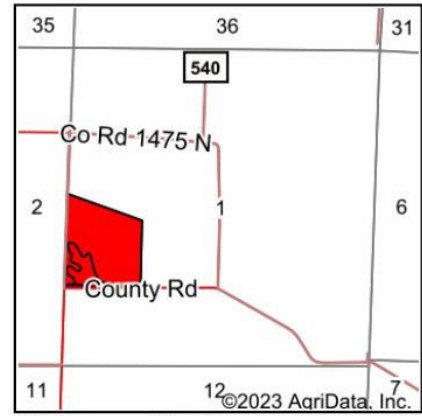
Area Symbol: IL025, Soil Area Version: 17								
Code	Soil Description	Acres	Percent of field	Ill. State Productivity Index Legend	Corn Bu/A	Soybeans Bu/A	Wheat Bu/A	Crop productivity index for optimum management
12A	Wynoose silt loam, 0 to 2 percent slopes	41.03	100.0%		128	42	51	97
Weighted Average					128	42	51	97

Table: Optimum Crop Productivity Ratings for Illinois Soil by K.R. Olson and J.M. Lang, Office of Research, ACES, University of Illinois at Champaign-Urbana. Version: 1/2/2012 Amended Table S2 B811

Crop yields and productivity indices for optimum management (B811) are maintained at the following NRES web site: <http://soilproductivity.nres.illinois.edu/>

** Indexes adjusted for slope and erosion according to Bulletin 811 Table S3

Soils Map



State: **Illinois**
 County: **Clay**
 Location: **1-4N-5E**
 Township: **Oskaloosa**
 Acres: **41.61**
 Date: **9/20/2023**

Maps Provided By:

 CUSTOMIZED ONLINE MAPPING
 © AgriData, Inc. 2023 www.AgriDataInc.com



Soils data provided by USDA and NRCS.

Area Symbol: IL025, Soil Area Version: 17								
Code	Soil Description	Acres	Percent of field	Il. State Productivity Index Legend	Corn Bu/A	Soybeans Bu/A	Wheat Bu/A	Crop productivity index for optimum management
12A	Wynoose silt loam, 0 to 2 percent slopes	35.42	85.1%		128	42	51	97
**13B2	Bluford silt loam, 2 to 5 percent slopes, eroded	5.79	13.9%		**129	**42	**52	**96
991A	Cisne-Huey silt loams, 0 to 2 percent slopes	0.40	1.0%		133	45	52	102
Weighted Average					128.2	42	51.1	96.9

Table: Optimum Crop Productivity Ratings for Illinois Soil by K.R. Olson and J.M. Lang, Office of Research, ACES, University of Illinois at Champaign-Urbana. Version: 1/2/2012 Amended Table S2 B811

Crop yields and productivity indices for optimum management (B811) are maintained at the following NRES web site: <http://soilproductivity.nres.illinois.edu/>

** Indexes adjusted for slope and erosion according to Bulletin 811 Table S3



© Farm & Home Publishers, Ltd.

OSKALOOSA

T-4-N • R-5-E

See Page 55 For Additional Names.

