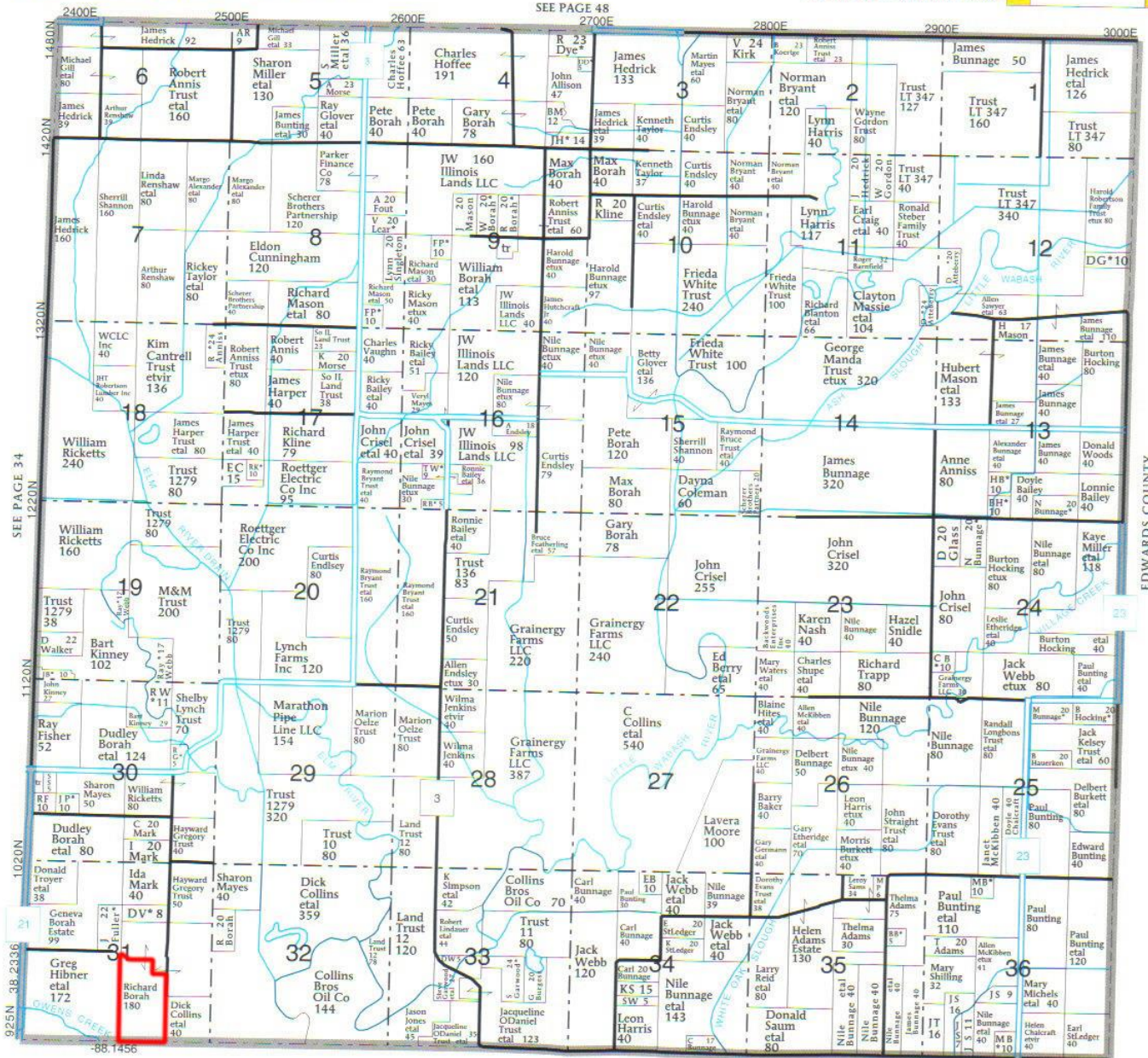
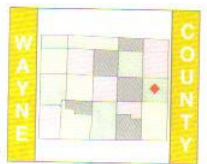




MASSILON T-1-S • R-9-E

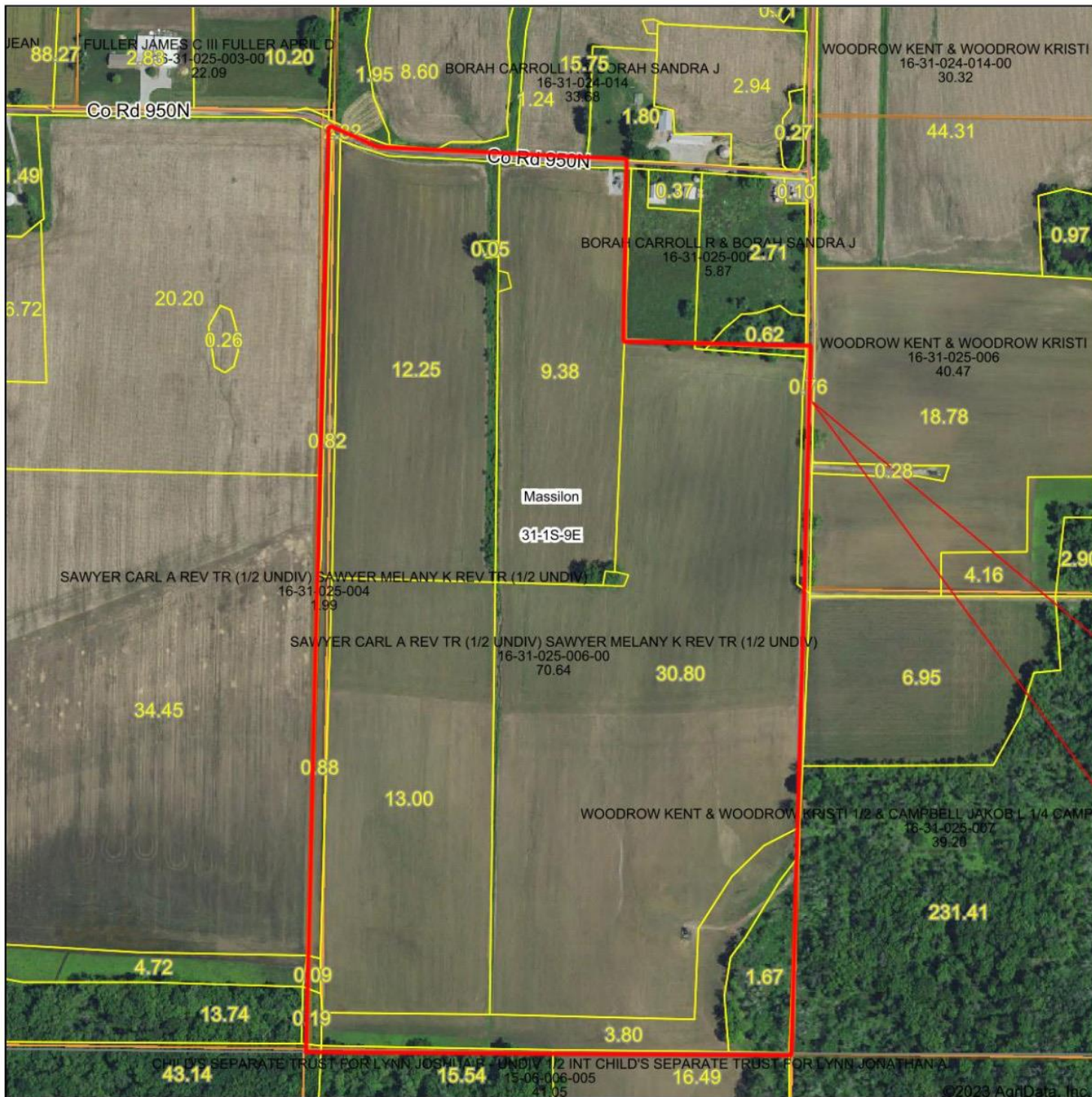
© Farm & Home Publishers, Ltd.

See Page 80 For Additional Names.



SEE PAGE 40

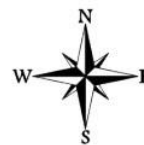
Aerial Map



Map Center: 38° 23' 24.77, -88° 14' 49.05



31-1S-9E
Wayne County
Illinois

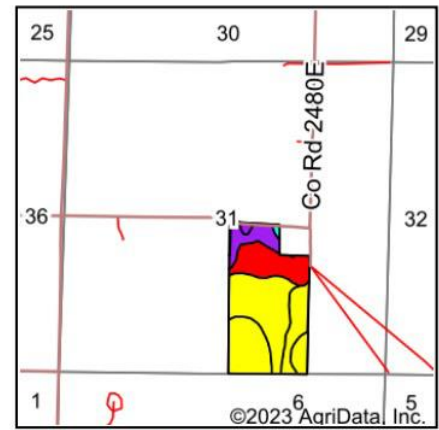
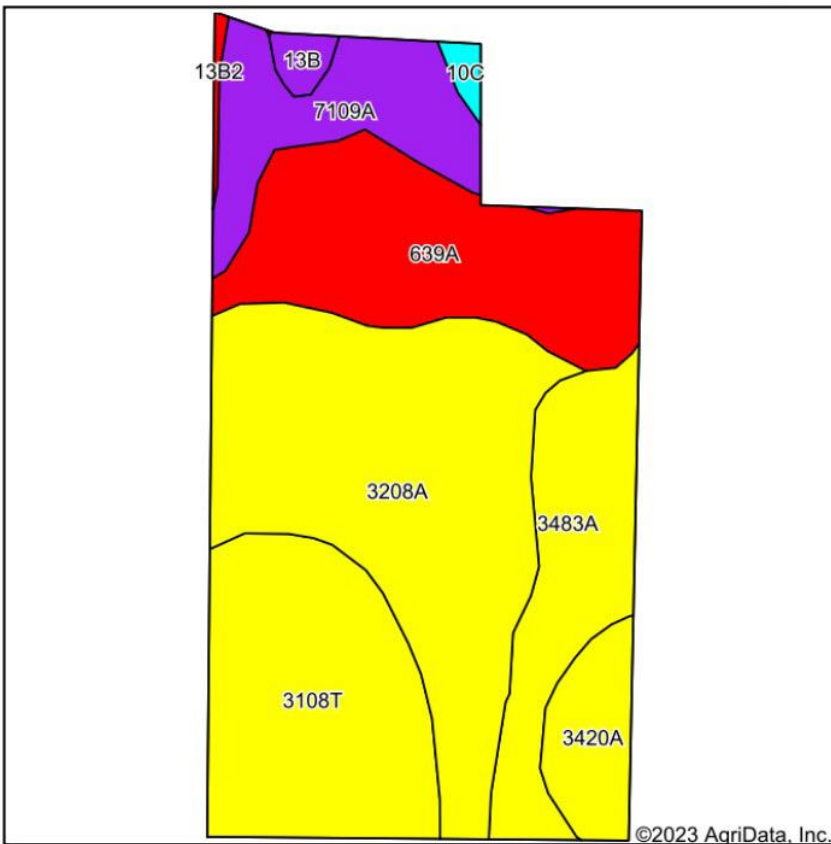


Maps Provided By:
surety
 CUSTOMIZED ONLINE MAPPING
 © AgriData, Inc. 2023 www.AgrIDataInc.com

9/6/2023

Field borders provided by Farm Service Agency as of 5/21/2008.

Soils Map



State: **Illinois**
 County: **Wayne**
 Location: **31-1S-9E**
 Township: **Massilon**
 Acres: **72.26**
 Date: **9/6/2023**

Maps Provided By:

 CUSTOMIZED ONLINE MAPPING
 © AgriData, Inc. 2023 www.AgriDataInc.com



Soils data provided by USDA and NRCS.

©2023 AgriData, Inc.

Area Symbol: IL191, Soil Area Version: 20

Code	Soil Description	Acres	Percent of field	Il. State Productivity Index Legend	Corn Bu/A	Soybeans Bu/A	Wheat Bu/A	Crop productivity index for optimum management
3208A	Sexton silt loam, 0 to 2 percent slopes, frequently flooded	23.46	32.5%		157	50	63	116
639A	Wynoose silt loam, bench, 0 to 2 percent slopes	14.03	19.4%		128	40	51	95
3108T	Bonnie silt loam, sodic, 0 to 2 percent slopes, frequently flooded	14.02	19.4%		149	49	59	111
3483A	Henshaw silt loam, 0 to 2 percent slopes, frequently flooded	8.73	12.1%		160	50	60	117
7109A	Racoon silt loam, 0 to 2 percent slopes, rarely flooded	6.96	9.6%		144	46	56	106
3420A	Piopolis silty clay loam, 0 to 2 percent slopes, frequently flooded	3.61	5.0%		142	48	59	108
**13B	Bluford silt loam, 2 to 5 percent slopes	0.72	1.0%		**135	**44	**54	**100
**10C	Plumfield silty clay loam, 5 to 10 percent slopes	0.46	0.6%		**103	**34	**39	**78
**13B2	Bluford silt loam, 2 to 5 percent slopes, eroded	0.27	0.4%		**129	**42	**52	**96
Weighted Average					147.5	47.2	58.4	109.2

Table: Optimum Crop Productivity Ratings for Illinois Soil by K.R. Olson and J.M. Lang, Office of Research, ACES, University of Illinois at Champaign-Urbana. Version: 1/2/2012 Amended Table S2 B811

Crop yields and productivity indices for optimum management (B811) are maintained at the following NRES web site: <http://soilproductivity.nres.illinois.edu/>

** Indexes adjusted for slope and erosion according to Bulletin 811 Table S3