

ORCHARD

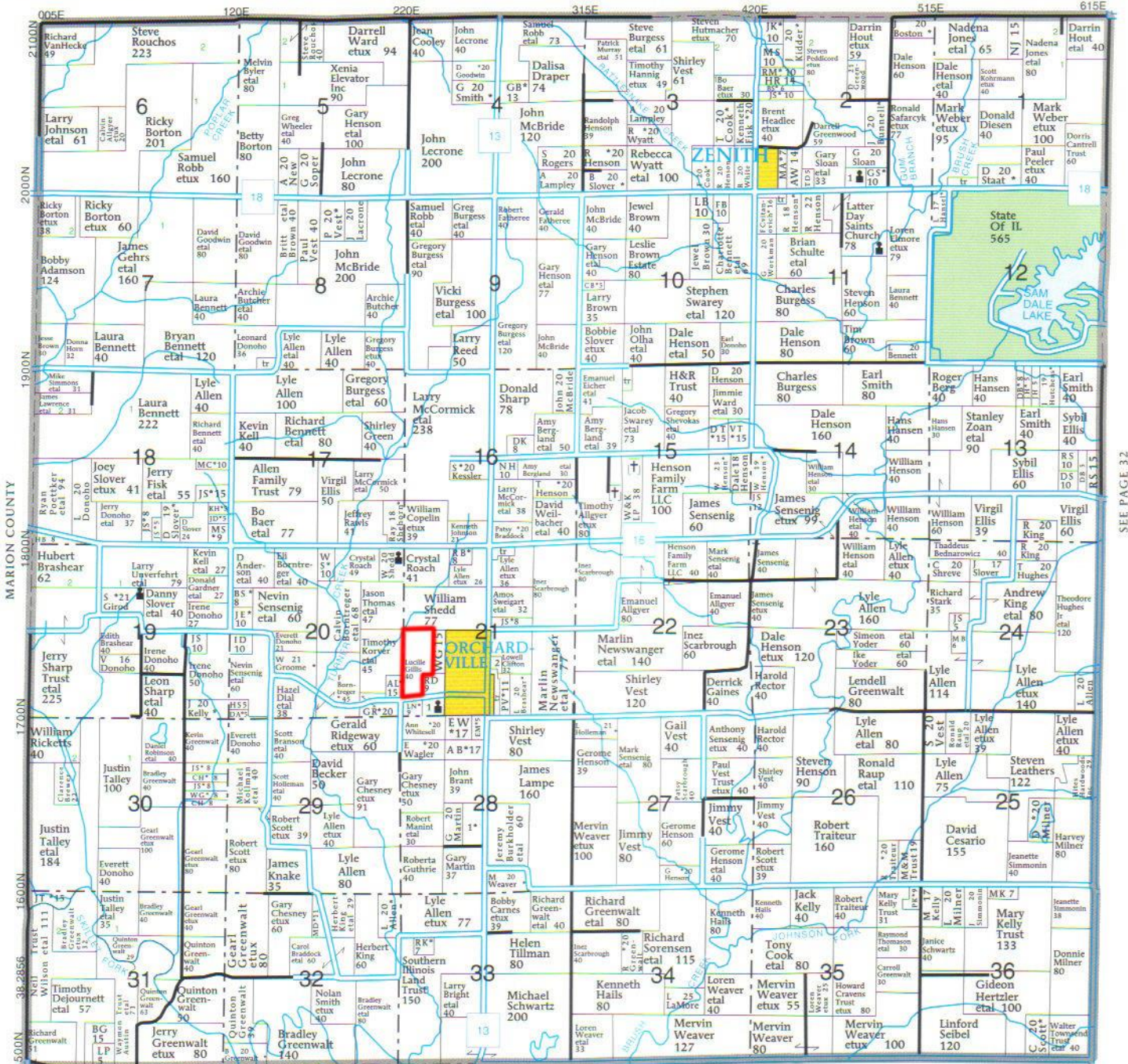
T-1-N • R-5-E

© Farm & Home Publishers, Ltd.

See Page 80 For Additional Names.



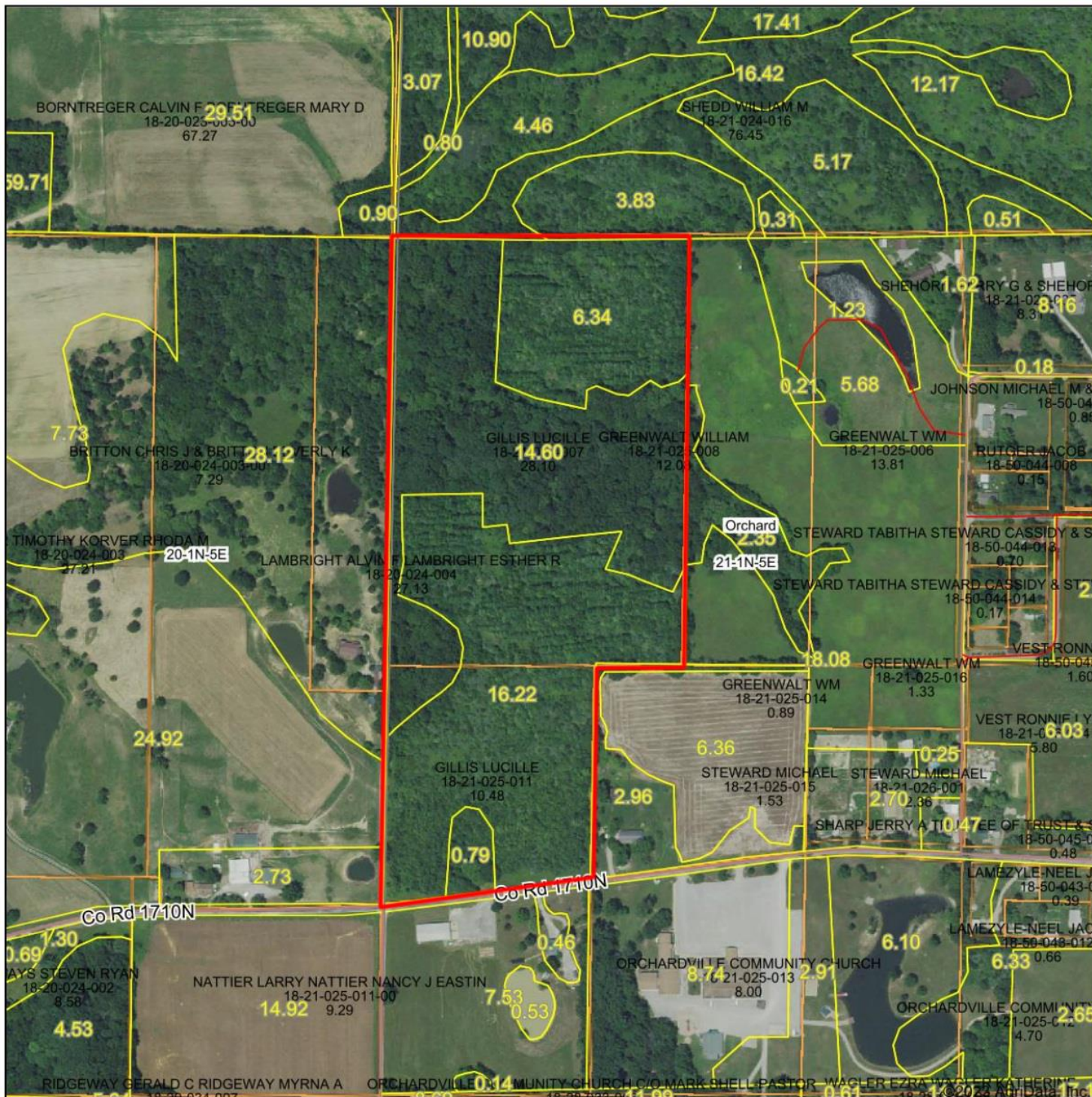
SEE PAGE 26



SEE PAGE 32

88.4131

Aerial Map



Map Center: 38° 30' 32.56, -88° 39' 28.12

0ft 482ft 965ft

21-1N-5E
Wayne County
Illinois



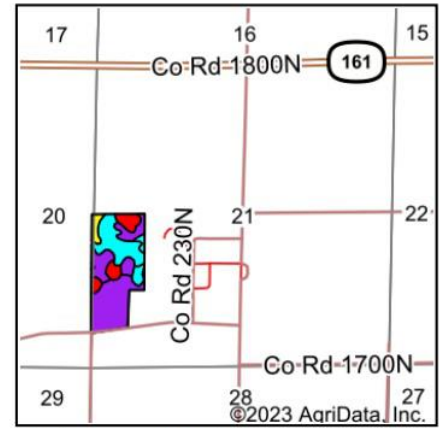
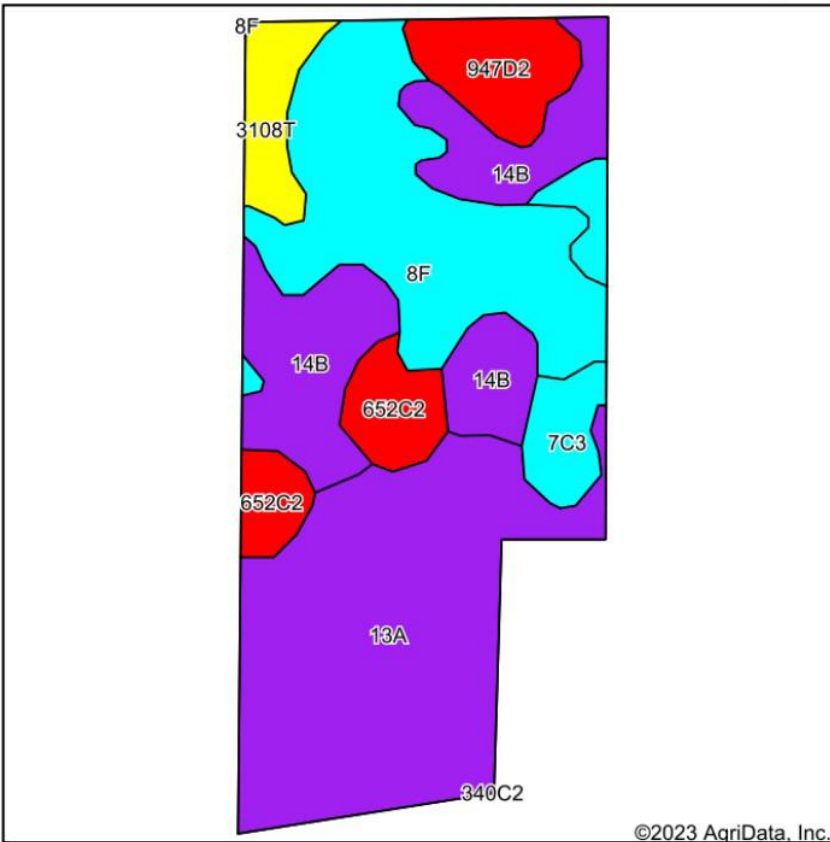
Maps Provided By:

 CUSTOMIZED ONLINE MAPPING
 © AgriData, Inc. 2023 www.AgridataInc.com

7/12/2023

Field borders provided by Farm Service Agency as of 5/21/2008.

Soils Map



State: **Illinois**
 County: **Wayne**
 Location: **21-1N-5E**
 Township: **Orchard**
 Acres: **39.32**
 Date: **7/12/2023**

Maps Provided By:

 CUSTOMIZED ONLINE MAPPING
 © AgriData, Inc. 2023 www.AgriDataInc.com



Soils data provided by USDA and NRCS.

©2023 AgriData, Inc.

Area Symbol: IL191, Soil Area Version: 20								
Code	Soil Description	Acres	Percent of field	Il. State Productivity Index Legend	Corn Bu/A	Soybeans Bu/A	Wheat Bu/A	Crop productivity index for optimum management
13A	Bluford silt loam, 0 to 2 percent slopes	13.90	35.4%		136	44	55	101
**8F	Hickory silt loam, 18 to 35 percent slopes	9.29	23.6%		**86	**29	**35	**65
**14B	Ava silt loam, 2 to 5 percent slopes	7.69	19.6%		**134	**44	**54	**99
**652C2	Passport silt loam, 5 to 10 percent slopes, eroded	2.46	6.3%		**116	**39	**51	**88
**947D2	Hickory-Passport silt loams, 10 to 18 percent slopes, eroded	2.31	5.9%		**119	**39	**50	**88
**7C3	Atlas silty clay loam, 5 to 10 percent slopes, severely eroded	2.05	5.2%		**87	**30	**34	**67
3108T	Bonnie silt loam, sodic, 0 to 2 percent slopes, frequently flooded	1.62	4.1%		149	49	59	111
Weighted Average					119.5	39.3	48.6	89.2

Table: Optimum Crop Productivity Ratings for Illinois Soil by K.R. Olson and J.M. Lang, Office of Research, ACES, University of Illinois at Champaign-Urbana. Version: 1/2/2012 Amended Table S2 B811

Crop yields and productivity indices for optimum management (B811) are maintained at the following NRES web site: <http://soilproductivity.nres.illinois.edu/>

** Indexes adjusted for slope and erosion according to Bulletin 811 Table S3