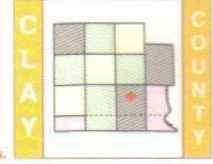




STANFORD N

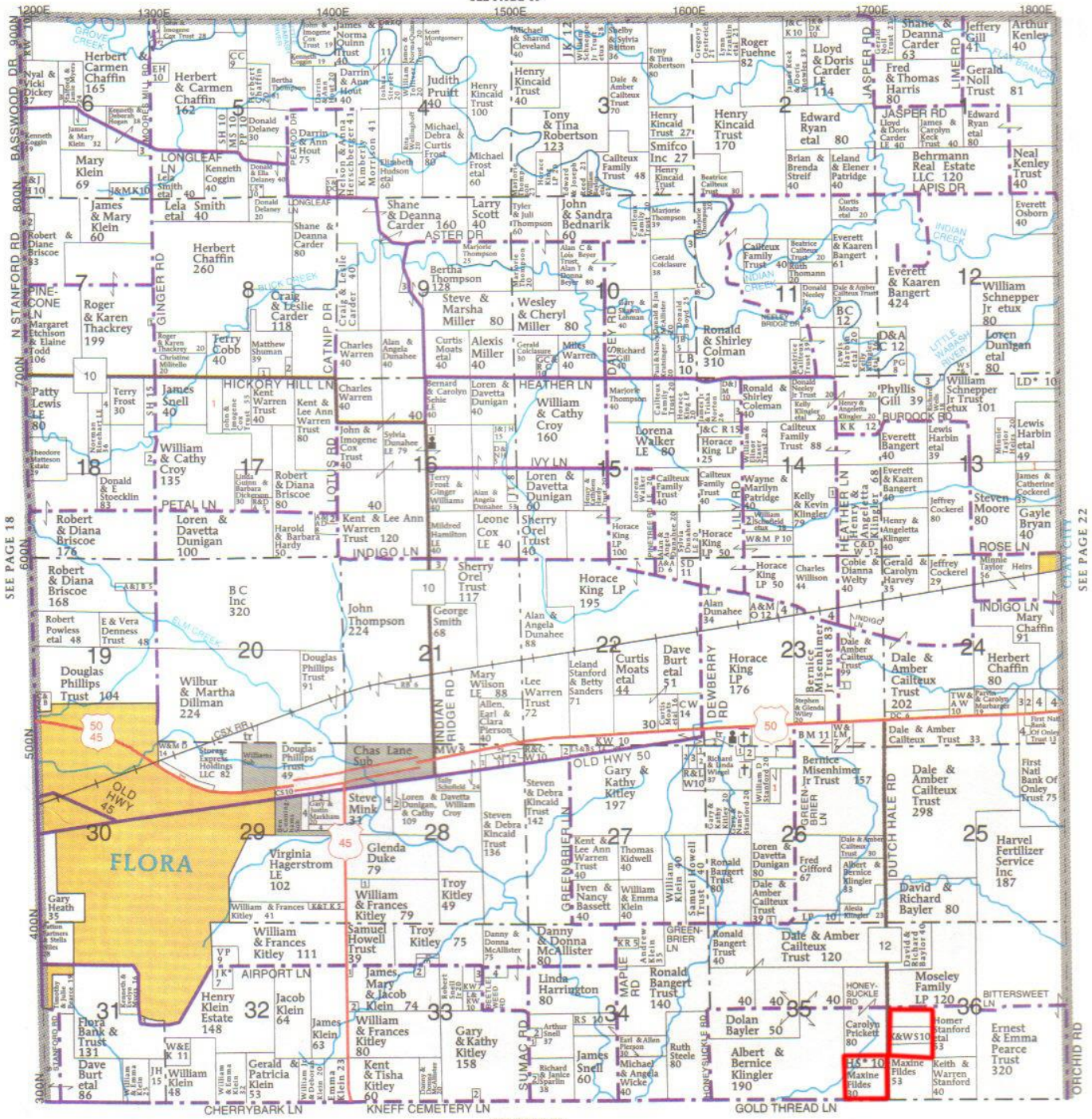
T-3-N • R-4-E



© Farm & Home Publishers, Ltd.

See Page 55 For Additional Names.

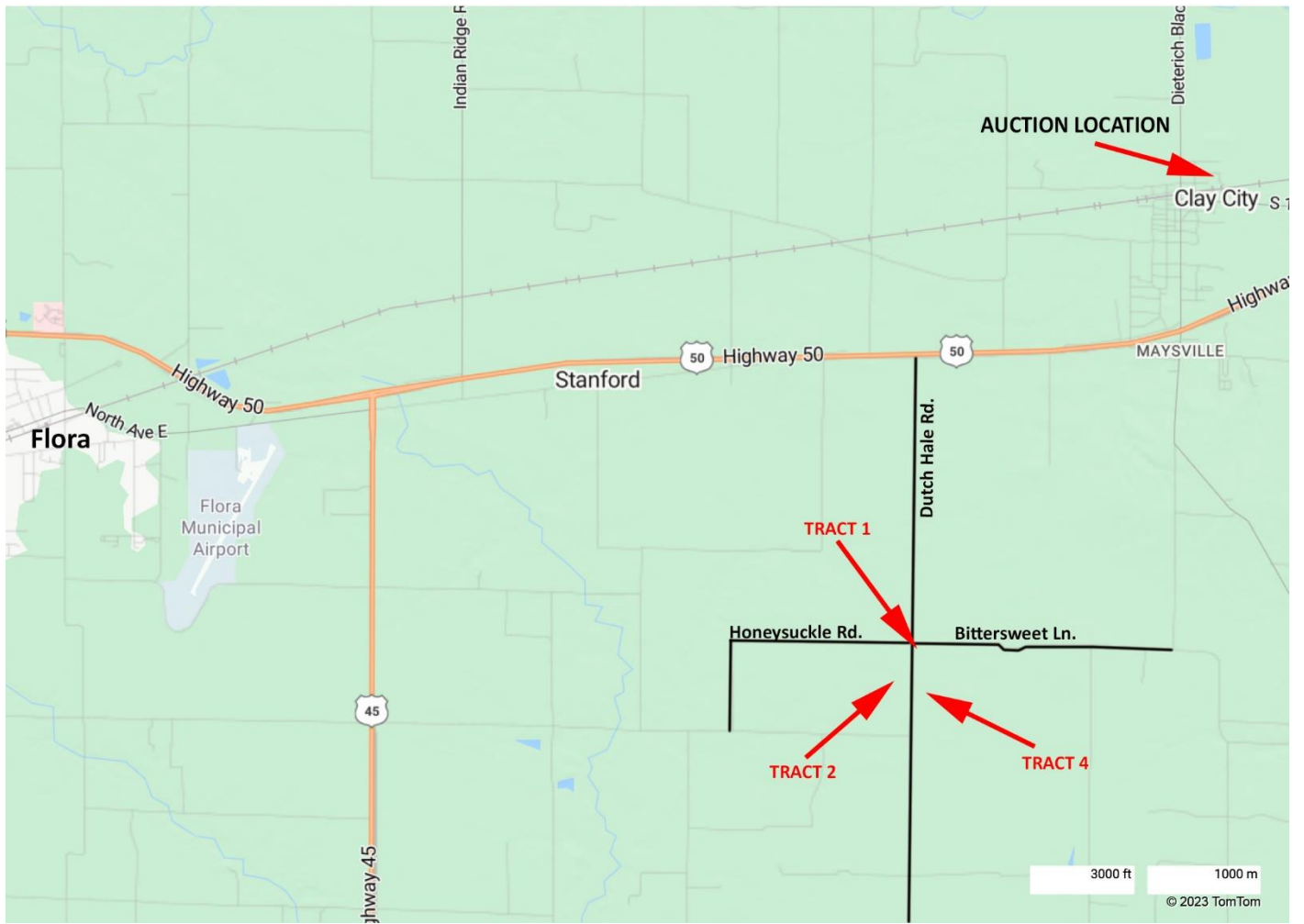
SEE PAGE 15



SEE PAGE 21

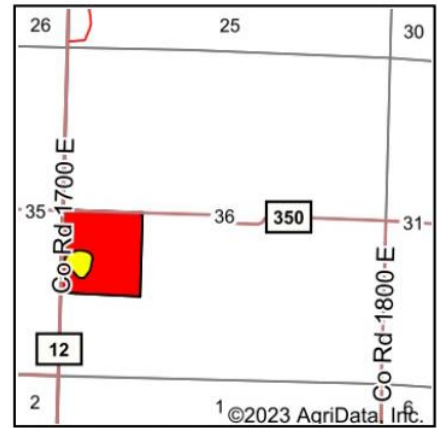
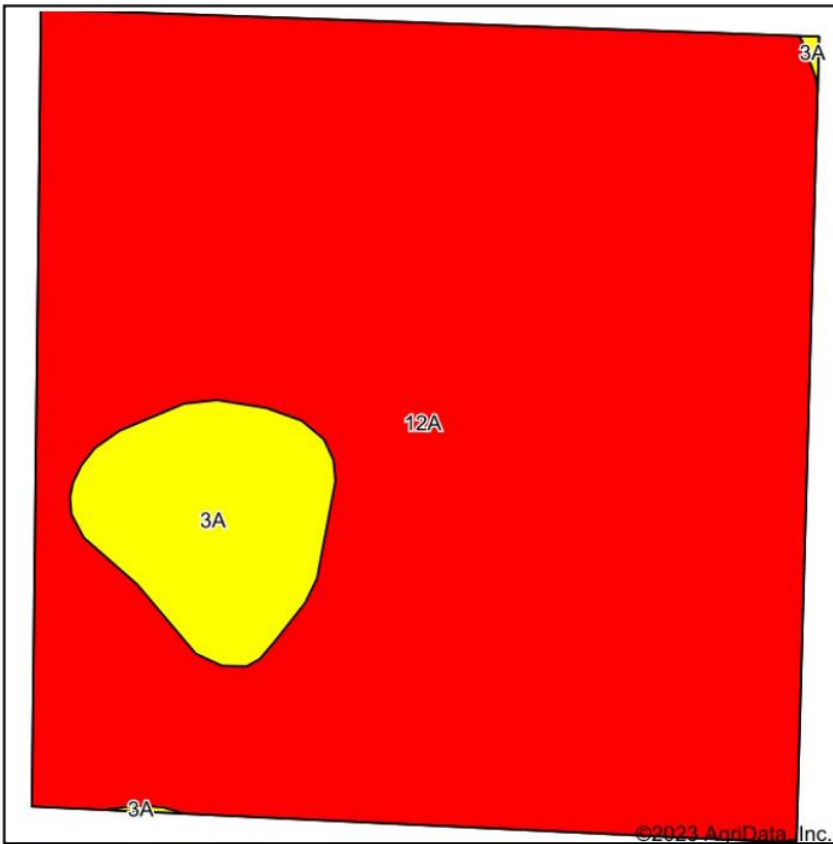
SEE PAGE 18

SEE PAGE 22



TRACT 1 – EAST 40 ACRES

Soils Map



State: **Illinois**
 County: **Clay**
 Location: **35-3N-7E**
 Township: **Stanford**
 Acres: **41.37**
 Date: **6/19/2023**



Soils data provided by USDA and NRCS.

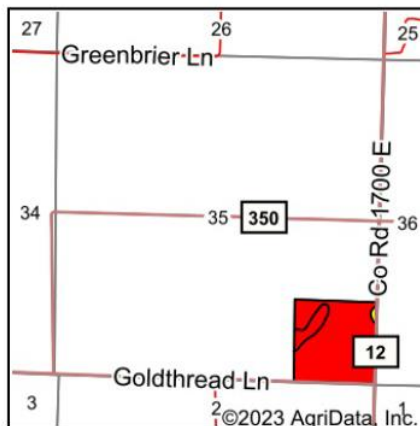
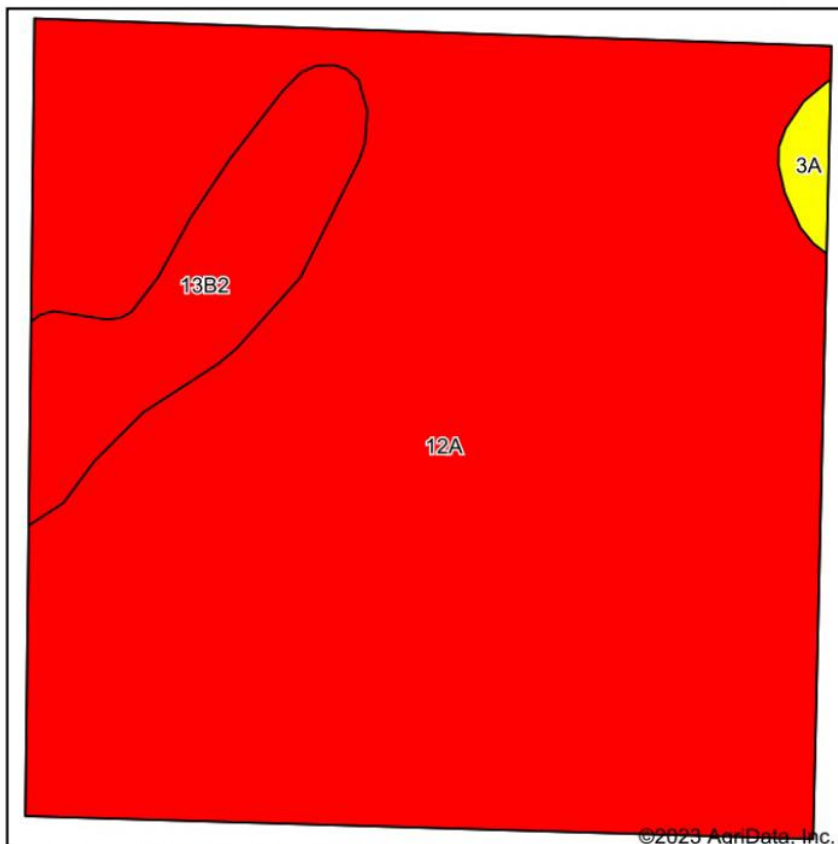
Area Symbol: IL025, Soil Area Version: 17

Code	Soil Description	Acres	Percent of field	Il. State Productivity Index Legend	Corn Bu/A	Soybeans Bu/A	Wheat Bu/A	Crop productivity index for optimum management
12A	Wynoose silt loam, 0 to 2 percent slopes	38.03	91.9%		128	42	51	97
3A	Hoyleton silt loam, 0 to 2 percent slopes	3.34	8.1%		146	46	58	108
Weighted Average					129.5	42.3	51.6	97.9

Table: Optimum Crop Productivity Ratings for Illinois Soil by K.R. Olson and J.M. Lang, Office of Research, ACES, University of Illinois at Champaign-Urbana. Version: 1/2/2012 Amended Table S2 B811
 Crop yields and productivity indices for optimum management (B811) are maintained at the following NRES web site: <http://soilproductivity.nres.illinois.edu/>
 ** Indexes adjusted for slope and erosion according to Bulletin 811 Table S3

TRACT 2 – WEST 40 ACRES

Soils Map



State: **Illinois**
 County: **Clay**
 Location: **35-3N-7E**
 Township: **Stanford**
 Acres: **41.61**
 Date: **6/19/2023**



Soils data provided by USDA and NRCS.

Area Symbol: IL025, Soil Area Version: 17

Code	Soil Description	Acres	Percent of field	Ill. State Productivity Index Legend	Corn Bu/A	Soybeans Bu/A	Wheat Bu/A	Crop productivity index for optimum management
12A	Wynoose silt loam, 0 to 2 percent slopes	37.60	90.4%		128	42	51	97
**13B2	Bluford silt loam, 2 to 5 percent slopes, eroded	3.62	8.7%		**129	**42	**52	**96
3A	Hoyleton silt loam, 0 to 2 percent slopes	0.39	0.9%		146	46	58	108
Weighted Average					128.3	42	51.2	97

Table: Optimum Crop Productivity Ratings for Illinois Soil by K.R. Olson and J.M. Lang, Office of Research, ACES, University of Illinois at Champaign-Urbana. Version: 1/2/2012 Amended Table S2 B811

Crop yields and productivity indices for optimum management (B811) are maintained at the following NRES web site: <http://soilproductivity.nres.illinois.edu/>

** Indexes adjusted for slope and erosion according to Bulletin 811 Table S3