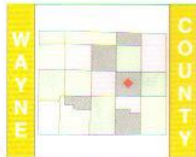


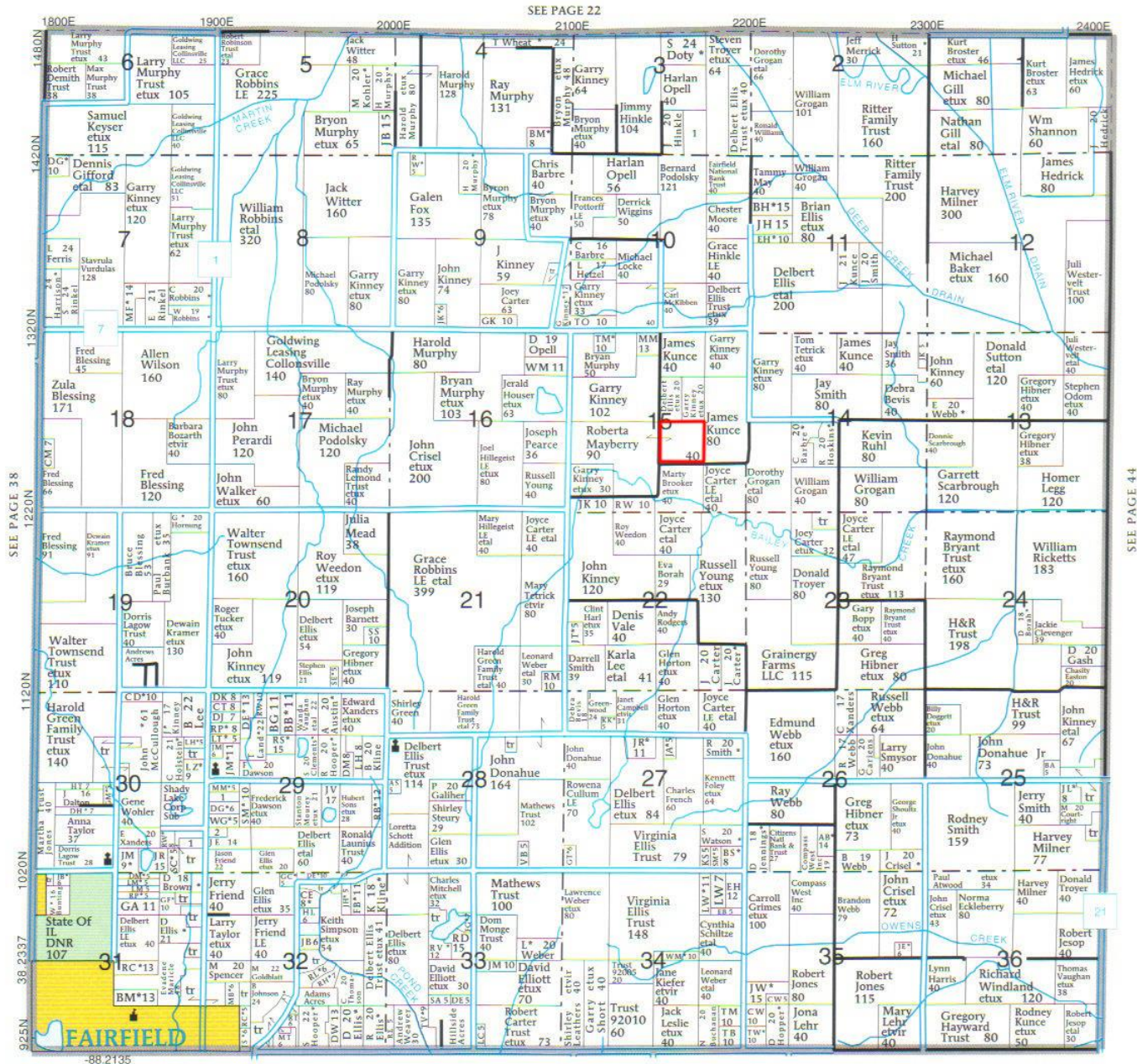


JASPER T-1-S • R-8-E



© Farm & Home Publishers, Ltd.

See Page 80 For Additional Names.



SEE PAGE 38

SEE PAGE 44

Aerial Map



Map Center: 38° 26' 6.78, -88° 18' 6.57

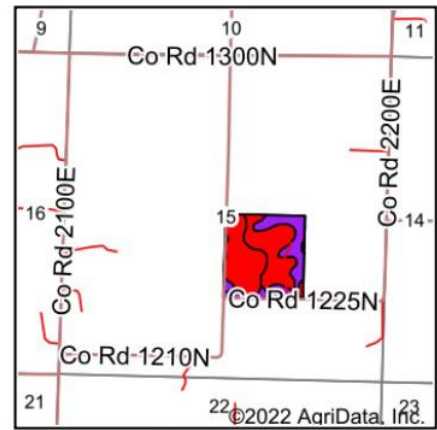
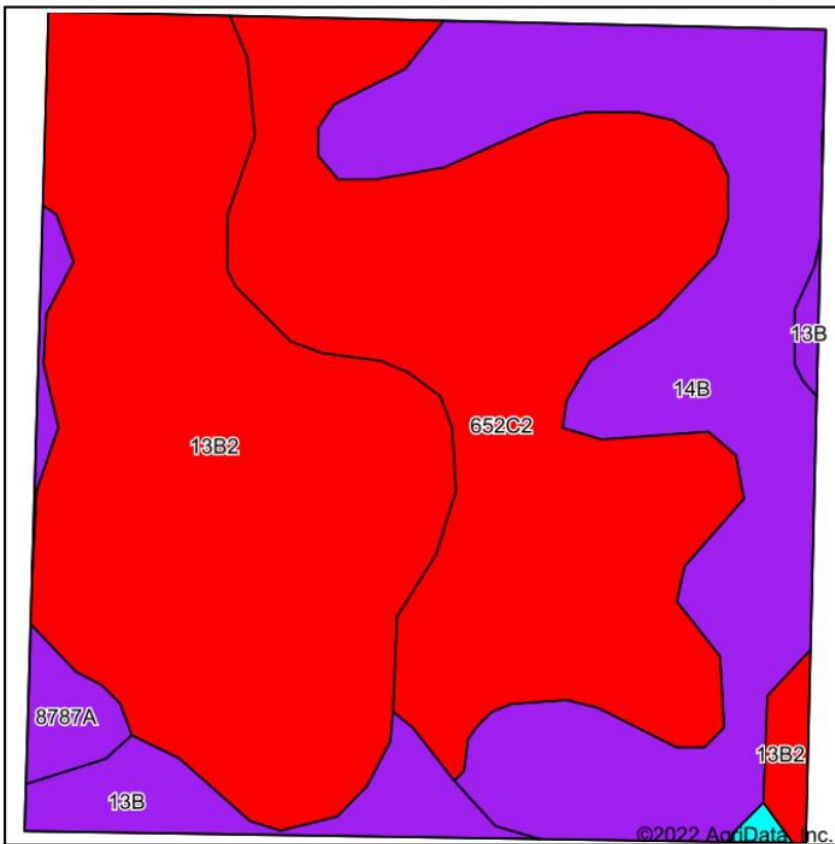


15-1S-8E
Wayne County
Illinois



10/24/2022

Soils Map



State: **Illinois**
 County: **Wayne**
 Location: **15-1S-8E**
 Township: **Jasper**
 Acres: **40.51**
 Date: **10/24/2022**

Maps Provided By

 CUSTOMIZED ONLINE MAPPING
 © AgriData, Inc. 2021 www.AgriDataInc.com



Area Symbol: IL191, Soil Area Version: 19

Code	Soil Description	Acres	Percent of field	Il. State Productivity Index Legend	Corn Bu/A	Soybeans Bu/A	Wheat Bu/A	Crop productivity index for optimum management
**13B2	Bluford silt loam, 2 to 5 percent slopes, eroded	14.52	35.8%		**129	**42	**52	**96
**652C2	Passport silt loam, 5 to 10 percent slopes, eroded	13.23	32.7%		**116	**39	**51	**88
**14B	Ava silt loam, 2 to 5 percent slopes	10.00	24.7%		**134	**44	**54	**99
**13B	Bluford silt loam, 2 to 5 percent slopes	1.79	4.4%		**135	**44	**54	**100
8787A	Banlic silt loam, 0 to 2 percent slopes, occasionally flooded	0.88	2.2%		142	47	56	106
**10C	Plumfield silty clay loam, 5 to 10 percent slopes	0.09	0.2%		**103	**34	**39	**78
Weighted Average					126.5	41.7	52.3	94.5

Table: Optimum Crop Productivity Ratings for Illinois Soil by K.R. Olson and J.M. Lang, Office of Research, ACES, University of Illinois at Champaign-Urbana. Version: 1/2/2012 Amended Table S2 B811

Crop yields and productivity indices for optimum management (B811) are maintained at the following NRES web site: <http://soilproductivity.nres.illinois.edu/>

** Indexes adjusted for slope and erosion according to Bulletin 811 Table S3