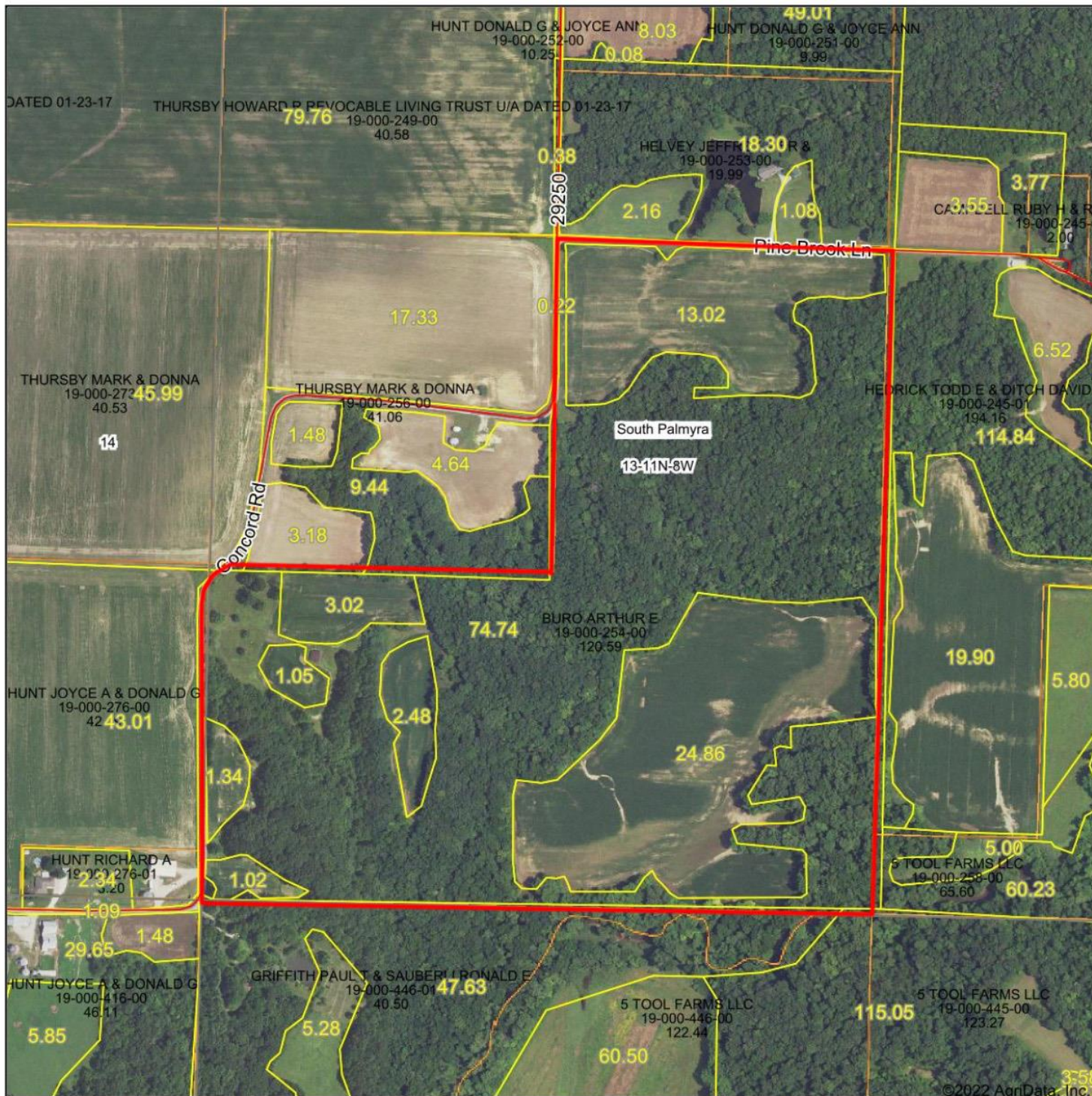


Aerial Map



Map Center: 39° 23' 42.27, -89° 56' 20.43



13-11N-8W
Macoupin County
Illinois

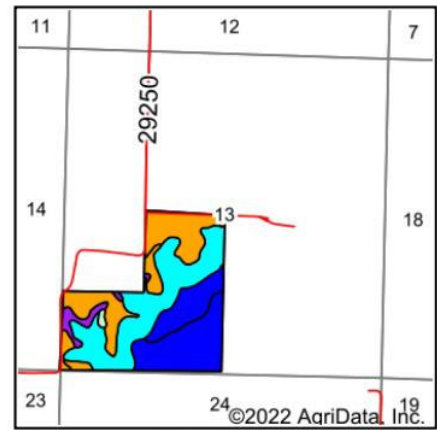
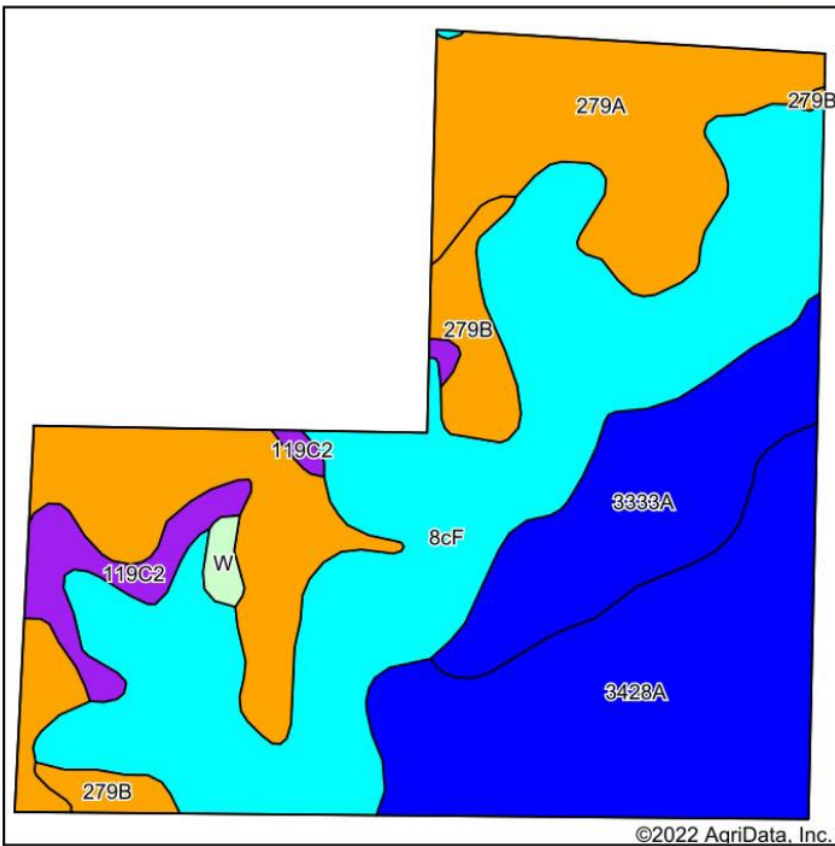


8/15/2022

Maps Provided By
 surety
CUSTOMIZED ONLINE MAPPING
© AgriData, Inc. 2021 www.AgridataInc.com

Field borders provided by Farm Service Agency as of 5/21/2008.

Soils Map



State: **Illinois**
 County: **Macoupin**
 Location: **13-11N-8W**
 Township: **South Palmyra**
 Acres: **119.48**
 Date: **8/15/2022**

Maps Provided By

 CUSTOMIZED ONLINE MAPPING
 © AgriData, Inc. 2021 www.AgriDataInc.com



Soils data provided by USDA and NRCS.

Area Symbol: IL117, Soil Area Version: 16

Code	Soil Description	Acres	Percent of field	Il. State Productivity Index Legend	Corn Bu/A	Soybeans Bu/A	Wheat Bu/A	Crop productivity index for optimum management
**8cF	Hickory silt loam, cool mesic, 18 to 35 percent slopes	42.30	35.4%		**86	**29	**35	**65
279A	Rozetta silt loam, 0 to 2 percent slopes	28.51	23.9%		164	51	65	120
3428A	Coffeen silt loam, 0 to 2 percent slopes, frequently flooded	25.42	21.3%		181	57	68	132
3333A	Wakeland silt loam, 0 to 2 percent slopes, frequently flooded	13.59	11.4%		174	56	68	128
**279B	Rozetta silt loam, 2 to 5 percent slopes	4.69	3.9%		**162	**50	**64	**119
**119C2	Elco silt loam, 5 to 10 percent slopes, eroded	4.26	3.6%		**140	**46	**55	**104
W	Water	0.71	0.6%					
Weighted Average					139.2	44.5	54.6	102.7

Table: Optimum Crop Productivity Ratings for Illinois Soil by K.R. Olson and J.M. Lang, Office of Research, ACES, University of Illinois at Champaign-Urbana. Version: 1/2/2012 Amended Table S2 B811
 Crop yields and productivity indices for optimum management (B811) are maintained at the following NRES web site: <http://soilproductivity.nres.illinois.edu/>
 ** Indexes adjusted for slope and erosion according to Bulletin 811 Table S3