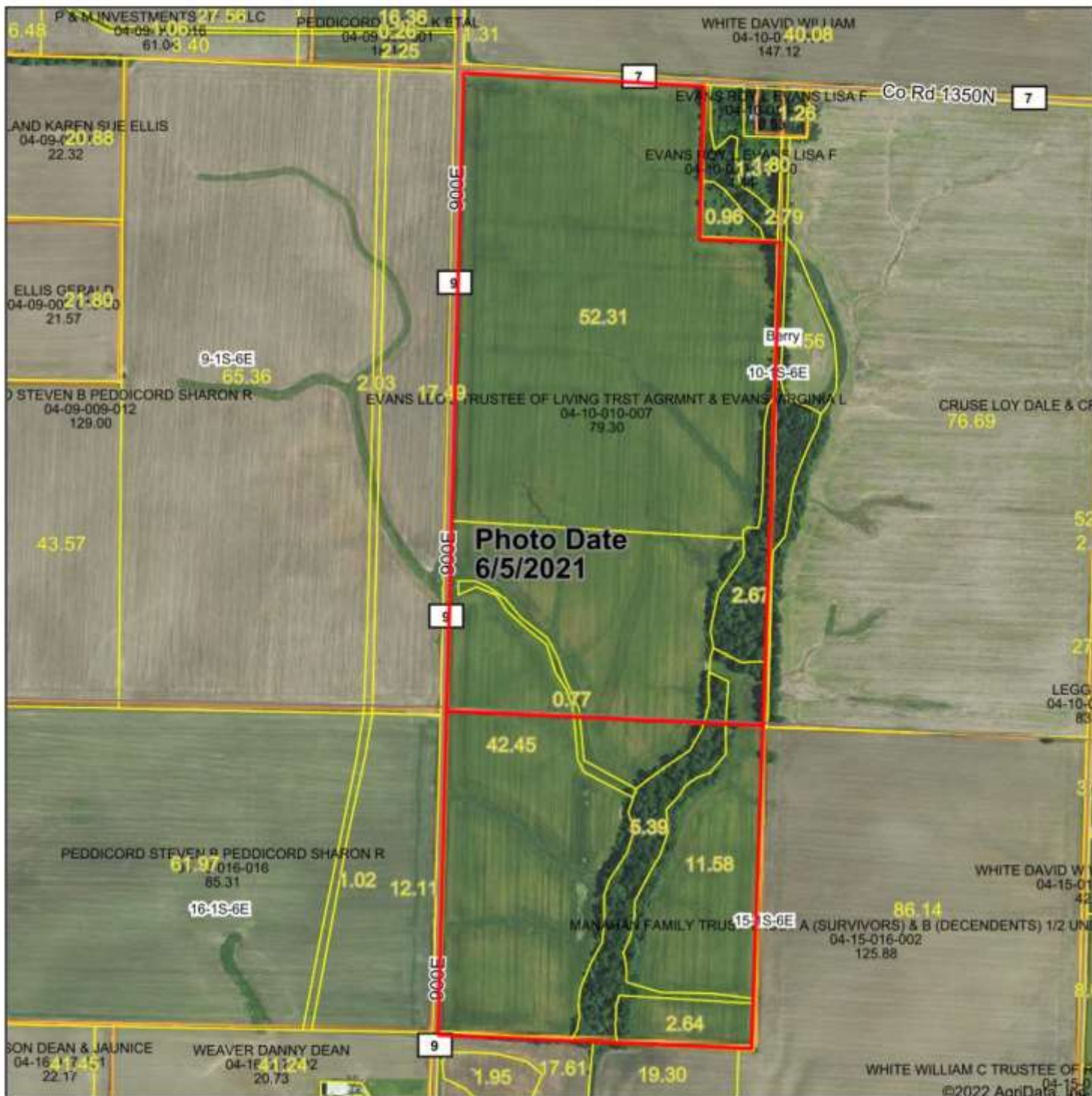
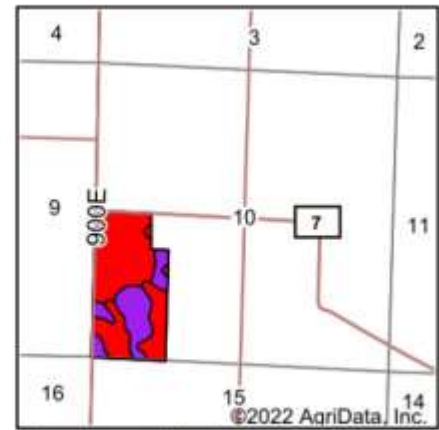
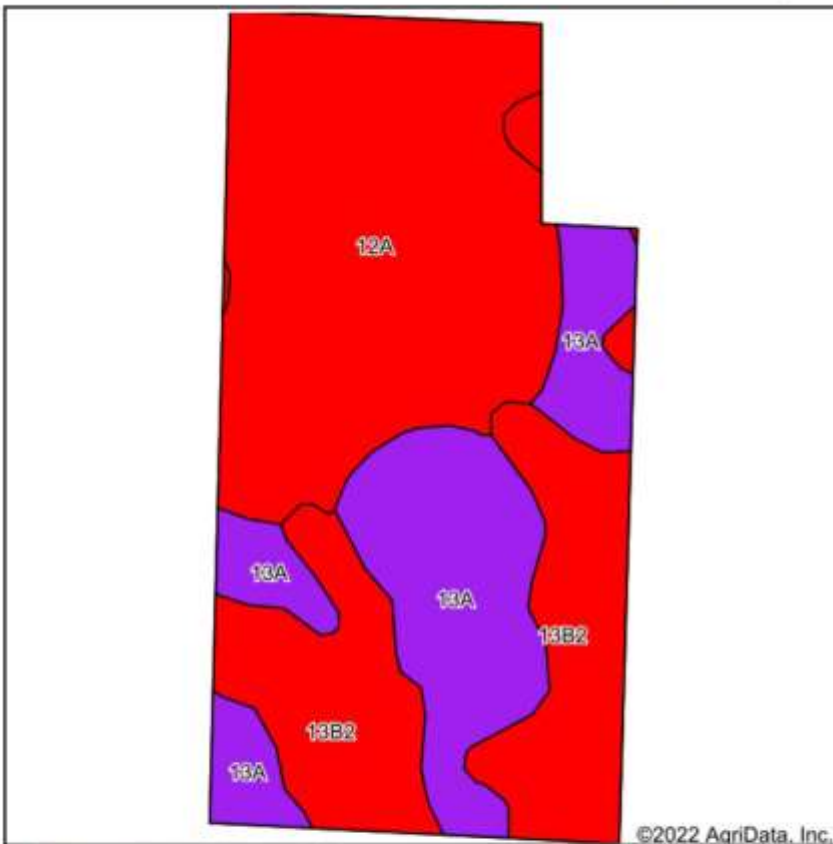


Aerial Map



Field borders provided by Farm Service Agency as of 5/21/2008.

Soils Map



State: **Illinois**
 County: **Wayne**
 Location: **10-1S-6E**
 Township: **Berry**
 Acres: **79.12**
 Date: **3/7/2022**

Maps Provided By

 CUSTOMIZED ONLINE MAPPING
 © AgriData, Inc. 2021 www.Agridatainc.com



Soils data provided by USDA and NRCS.

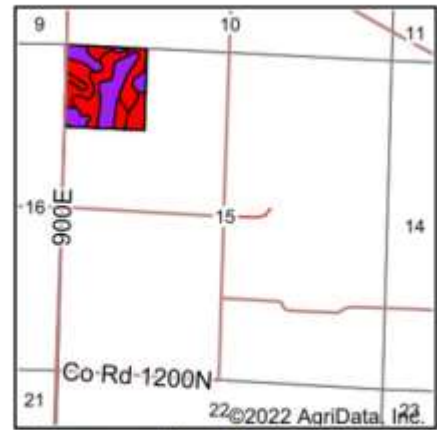
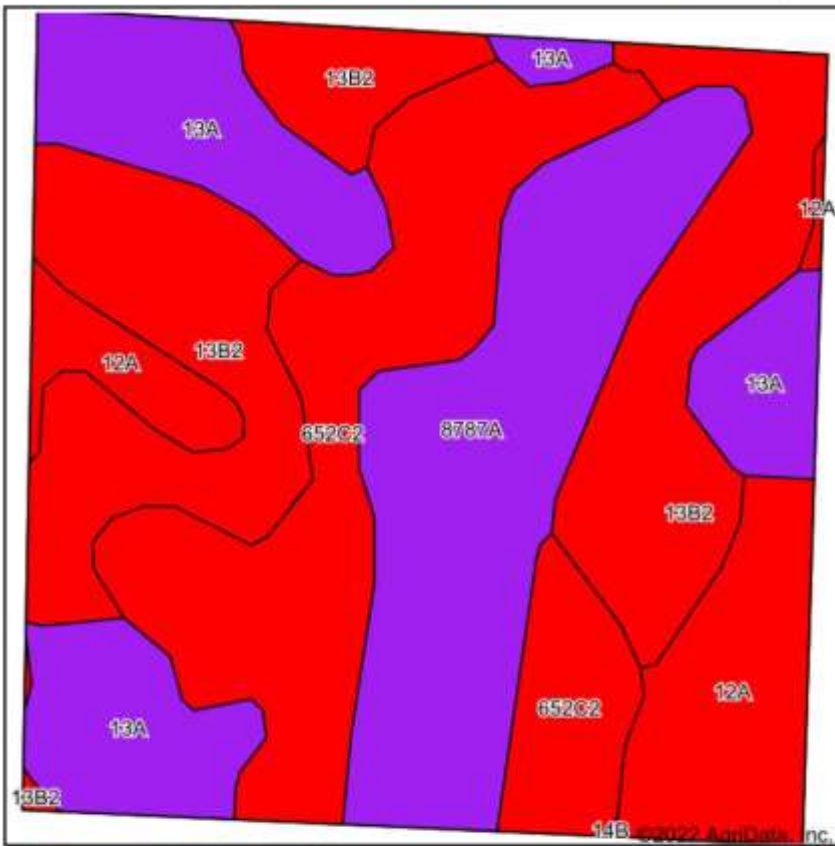
Area Symbol: IL191, Soil Area Version: 19								
Code	Soil Description	Acres	Percent of field	Il. State Productivity Index Legend	Corn Bu/A	Soybeans Bu/A	Wheat Bu/A	Crop productivity index for optimum management
12A	Wynooze silt loam, 0 to 2 percent slopes	35.48	44.8%		128	42	51	97
**13B2	Bluford silt loam, 2 to 5 percent slopes, eroded	22.21	28.1%		**129	**42	**52	**96
13A	Bluford silt loam, 0 to 2 percent slopes	21.43	27.1%		136	44	55	101
Weighted Average					130.4	42.5	52.4	97.8

Table: Optimum Crop Productivity Ratings for Illinois Soil by K.R. Olson and J.M. Lang, Office of Research, ACES, University of Illinois at Champaign-Urbana. Version: 1/2/2012 Amended Table S2 B811

Crop yields and productivity indices for optimum management (B811) are maintained at the following NRES web site: <http://soilproductivity.nres.illinois.edu/>

** Indexes adjusted for slope and erosion according to Bulletin 811 Table S3

Soils Map



State: **Illinois**
 County: **Wayne**
 Location: **10-1S-6E**
 Township: **Berry**
 Acres: **41.65**
 Date: **3/7/2022**

Maps Provided By

 CUSTOMIZED ONLINE MAPPING
 © AgriData, Inc. 2021 www.AgriDataInc.com



Soils data provided by USDA and NRCS.

Area Symbol: IL191, Soil Area Version: 19

Code	Soil Description	Acres	Percent of field	Il. State Productivity Index Legend	Corn Bu/A	Soybeans Bu/A	Wheat Bu/A	Crop productivity index for optimum management
**13B2	Bluford silt loam, 2 to 5 percent slopes, eroded	11.66	28.0%		**129	**42	**52	**96
**652C2	Passport silt loam, 5 to 10 percent slopes, eroded	9.86	23.7%		**116	**39	**51	**88
8787A	Banic silt loam, 0 to 2 percent slopes, occasionally flooded	8.35	20.0%		142	47	56	106
13A	Bluford silt loam, 0 to 2 percent slopes	7.19	17.3%		136	44	55	101
12A	Wynoose silt loam, 0 to 2 percent slopes	4.59	11.0%		128	42	51	97
Weighted Average					129.6	42.6	53	97.1

Table: Optimum Crop Productivity Ratings for Illinois Soil by K.R. Olson and J.M. Lang, Office of Research, ACES, University of Illinois at Champaign-Urbana. Version: 1/2/2012 Amended Table S2 B811

Crop yields and productivity indices for optimum management (B811) are maintained at the following NRES web site: <http://soilproductivity.nres.illinois.edu/>

** Indexes adjusted for slope and erosion according to Bulletin 811 Table S3

