

Aerial Map



Map Center: 39° 11' 15.6, -88° 44' 49.61



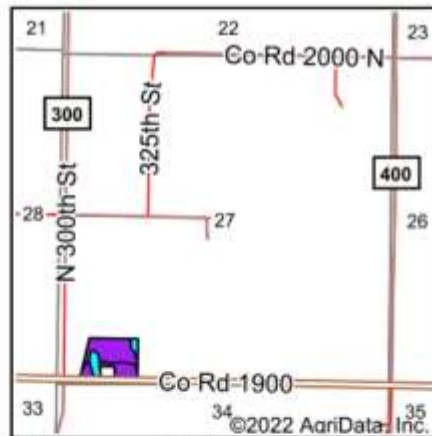
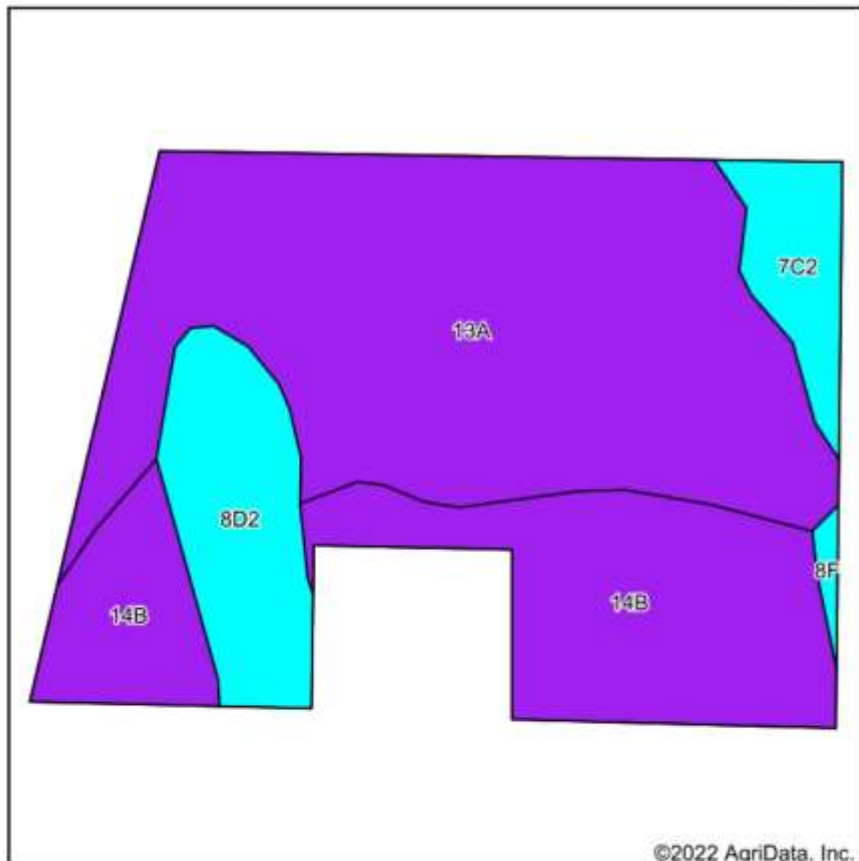
27-9N-4E
Effingham County
Illinois



Maps Provided By
**surety**
CUSTOMIZED ONLINE MAPPING
© AgriData, Inc. 2021 www.AgriDataInc.com

Field borders provided by Farm Service Agency as of 5/21/2008.

Soils Map



State: **Illinois**
 County: **Effingham**
 Location: **27-9N-4E**
 Township: **Liberty**
 Acres: **11.55**
 Date: **3/17/2022**



Soils data provided by USDA and NRCS.

©2022 AgriData, Inc.

Area Symbol: IL049, Soil Area Version: 18

Code	Soil Description	Acres	Percent of field	Il. State Productivity Index Legend	Corn Bu/A	Soybeans Bu/A	Wheat Bu/A	Crop productivity index for optimum management
13A	Bluford silt loam, 0 to 2 percent slopes	6.31	54.6%		136	44	55	101
**14B	Ava silt loam, 2 to 5 percent slopes	3.27	28.3%		**134	**44	**54	**99
**8D2	Hickory silt loam, 10 to 18 percent slopes, eroded	1.29	11.2%		**108	**36	**44	**82
**7C2	Atlas silt loam, 5 to 10 percent slopes, eroded	0.61	5.3%		**105	**37	**41	**81
**8F	Hickory silt loam, 18 to 35 percent slopes	0.07	0.6%		**86	**29	**35	**65
Weighted Average					130.4	42.6	52.6	97

Table: Optimum Crop Productivity Ratings for Illinois Soil by K.R. Olson and J.M. Lang, Office of Research, ACES, University of Illinois at Champaign-Urbana. Version: 1/2/2012 Amended Table S2 B811

Crop yields and productivity indices for optimum management (B811) are maintained at the following NRES web site: <http://soilproductivity.nres.illinois.edu/>

** Indexes adjusted for slope and erosion according to Bulletin 811 Table S3

Soils data provided by USDA and NRCS, Soils data provided by University of Illinois at Champaign-Urbana.