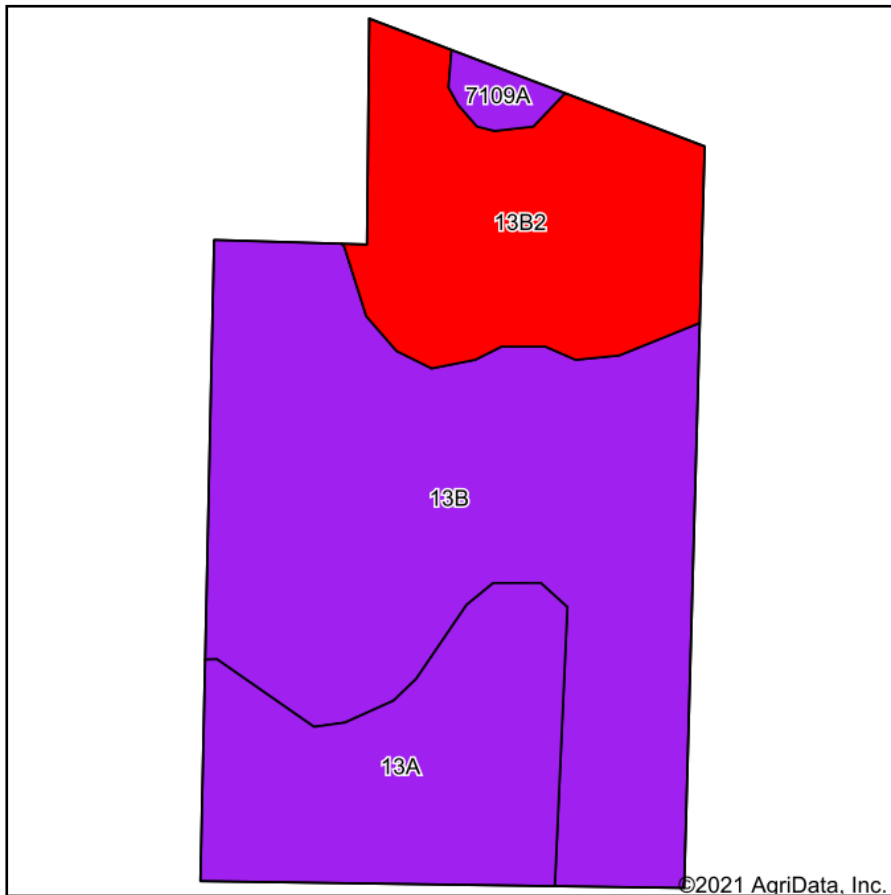
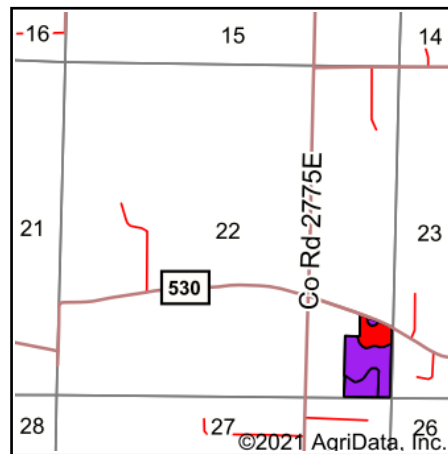


Soils Map



Soils data provided by USDA and NRCS.



State: **Illinois**
 County: **Wayne**
 Location: **22-2S-9E**
 Township: **Leech**
 Acres: **19.04**
 Date: **12/1/2021**



Area Symbol: IL191, Soil Area Version: 19

Code	Soil Description	Acres	Percent of field	Il. State Productivity Index Legend	Corn Bu/A	Soybeans Bu/A	Wheat Bu/A	Crop productivity index for optimum management
**13B	Bluford silt loam, 2 to 5 percent slopes	10.19	53.5%		**135	**44	**54	**100
**13B2	Bluford silt loam, 2 to 5 percent slopes, eroded	4.42	23.2%		**129	**42	**52	**96
13A	Bluford silt loam, 0 to 2 percent slopes	4.14	21.7%		136	44	55	101
7109A	Raccoon silt loam, 0 to 2 percent slopes, rarely flooded	0.29	1.5%		144	46	56	106
Weighted Average					134	43.6	53.8	99.4

Table: Optimum Crop Productivity Ratings for Illinois Soil by K.R. Olson and J.M. Lang, Office of Research, ACES, University of Illinois at Champaign-Urbana. Version: 1/2/2012 Amended Table S2 B811

Crop yields and productivity indices for optimum management (B811) are maintained at the following NRES web site: <http://soilproductivity.nres.illinois.edu/>

** Indexes adjusted for slope and erosion according to Bulletin 811 Table S3

Soils data provided by USDA and NRCS. Soils data provided by University of Illinois at Champaign-Urbana.