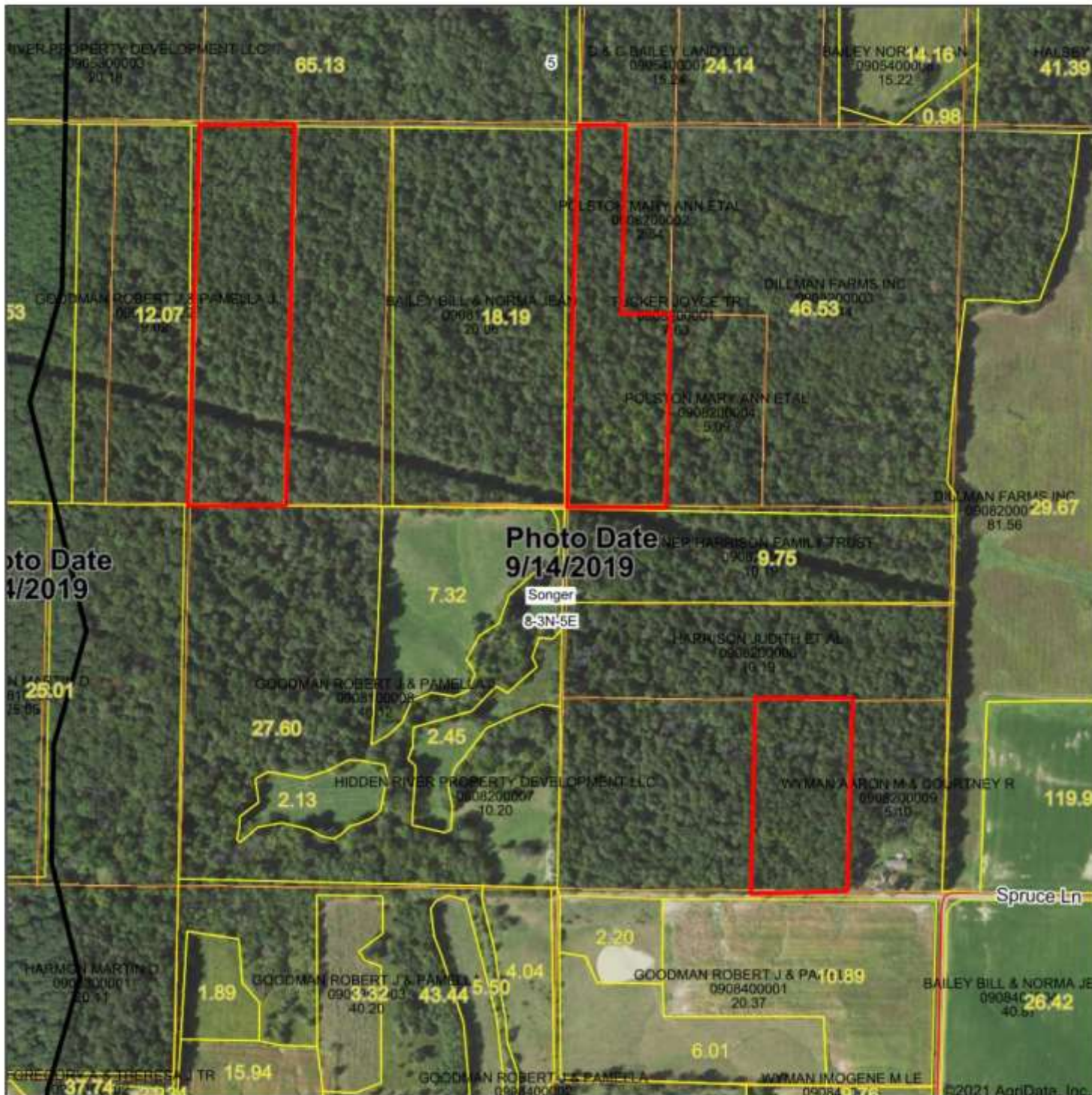


Aerial Map



Map Center: 38° 43' 9.74, -88° 40' 2.81



8-3N-5E
Clay County
Illinois

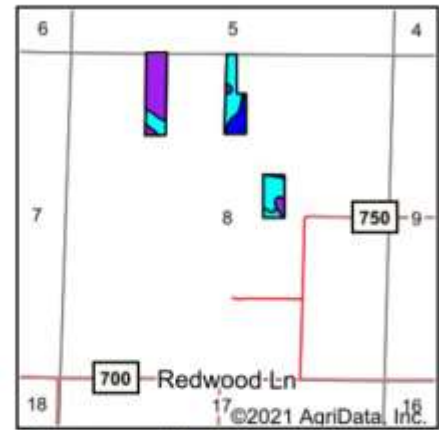
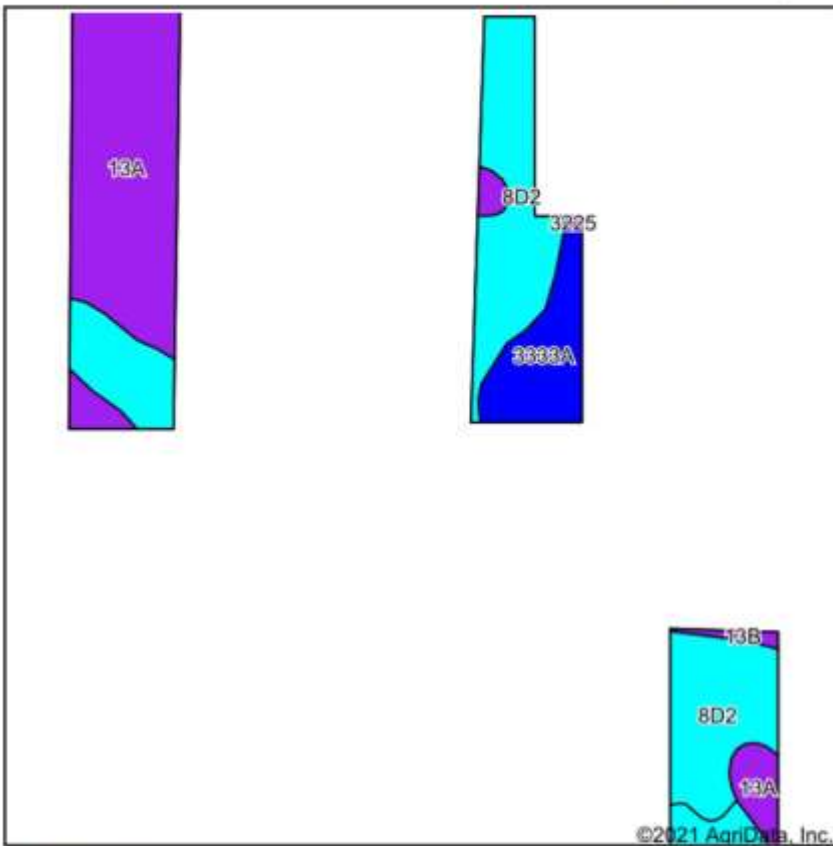


7/20/2021

Maps Provided By
surety
 CUSTOMIZED ONLINE MAPPING
 © AgriData, Inc. 2021 www.AgriDataInc.com

Field borders provided by Farm Service Agency as of 5/21/2008.

Soils Map



State: **Illinois**
 County: **Clay**
 Location: **8-3N-5E**
 Township: **Songer**
 Acres: **24.16**
 Date: **7/20/2021**



Soils data provided by USDA and NRCS.

Area Symbol: IL025, Soil Area Version: 15

Code	Soil Description	Acres	Percent of field	Il. State Productivity Index Legend	Corn Bu/A	Soybeans Bu/A	Wheat Bu/A	Crop productivity index for optimum management
**8D2	Hickory silt loam, 10 to 18 percent slopes, eroded	10.65	44.1%		**108	**36	**44	**82
13A	Bluford silt loam, 0 to 2 percent slopes	9.76	40.4%		136	44	55	101
3333A	Wakeland silt loam, 0 to 2 percent slopes, frequently flooded	2.74	11.3%		174	56	68	128
**7C2	Atlas silt loam, 5 to 10 percent slopes, eroded	0.79	3.3%		**105	**37	**41	**81
**13B	Bluford silt loam, 2 to 5 percent slopes	0.22	0.9%		**135	**44	**54	**100
Weighted Average					126.9	41.6	51.2	95

Table: Optimum Crop Productivity Ratings for Illinois Soil by K.R. Olson and J.M. Lang, Office of Research, ACES, University of Illinois at Champaign-Urbana. Version: 1/2/2012 Amended Table S2 B811

Crop yields and productivity indices for optimum management (B811) are maintained at the following NRES web site: <http://soilproductivity.nres.illinois.edu/>

** Indexes adjusted for slope and erosion according to Bulletin 811 Table S3