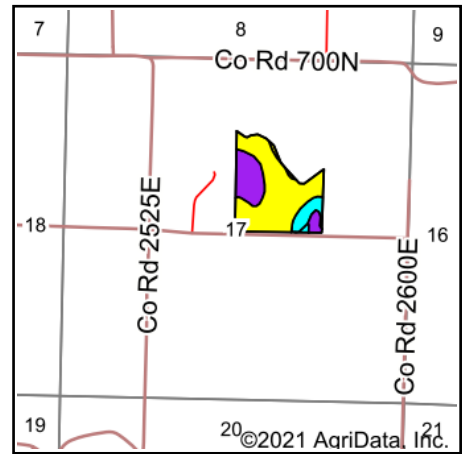
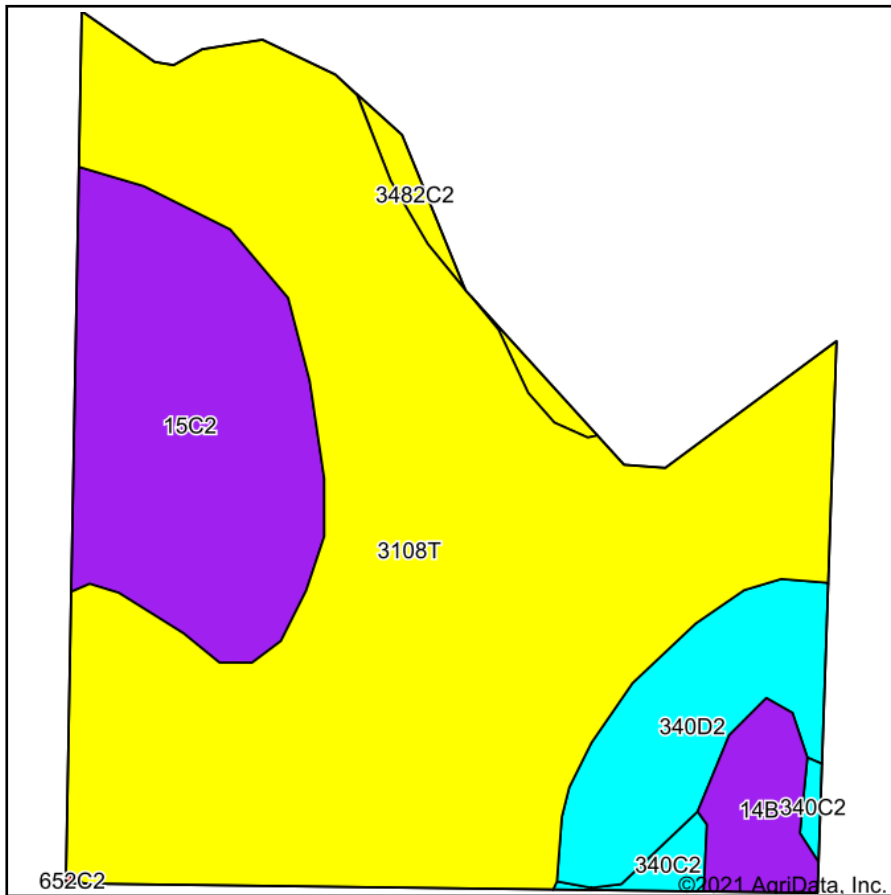


# Soils Map



State: **Illinois**  
 County: **Wayne**  
 Location: **17-2S-9E**  
 Township: **Leech**  
 Acres: **35.05**  
 Date: **8/16/2021**

Maps Provided By:  
  
 CUSTOMIZED ONLINE MAPPING  
 © AgriData, Inc. 2021 www.AgriDataInc.com



Soils data provided by USDA and NRCS.

Area Symbol: IL191, Soil Area Version: 18

Code	Soil Description	Acres	Percent of field	Il. State Productivity Index Legend	Corn Bu/A	Soybeans Bu/A	Wheat Bu/A	Crop productivity index for optimum management
3108T	Bonnie silt loam, sodic, 0 to 2 percent slopes, frequently flooded	23.17	66.1%		149	49	59	111
**15C2	Parke silt loam, 5 to 10 percent slopes, eroded	6.85	19.5%		**142	**44	**55	**102
**340D2	Zanesville silt loam, till plain, 10 to 18 percent slopes, eroded	2.96	8.4%		**104	**36	**45	**79
**14B	Ava silt loam, 2 to 5 percent slopes	1.21	3.5%		**134	**44	**54	**99
3482C2	Uniontown silt loam, 5 to 10 percent slopes, frequently flooded, eroded	0.45	1.3%		161	51	61	117
**340C2	Zanesville silt loam, till plain, 5 to 10 percent slopes, eroded	0.41	1.2%		**112	**39	**48	**85
<b>Weighted Average</b>					<b>143</b>	<b>46.7</b>	<b>56.8</b>	<b>105.9</b>

**Table: Optimum Crop Productivity Ratings for Illinois Soil by K.R. Olson and J.M. Lang, Office of Research, ACES, University of Illinois at Champaign-Urbana.** Version: 1/2/2012 Amended Table S2 B811

Crop yields and productivity indices for optimum management (B811) are maintained at the following NRES web site: <http://soilproductivity.nres.illinois.edu/>

\*\* Indexes adjusted for slope and erosion according to Bulletin 811 Table S3

Soils data provided by USDA and NRCS. Soils data provided by University of Illinois at Champaign-Urbana.