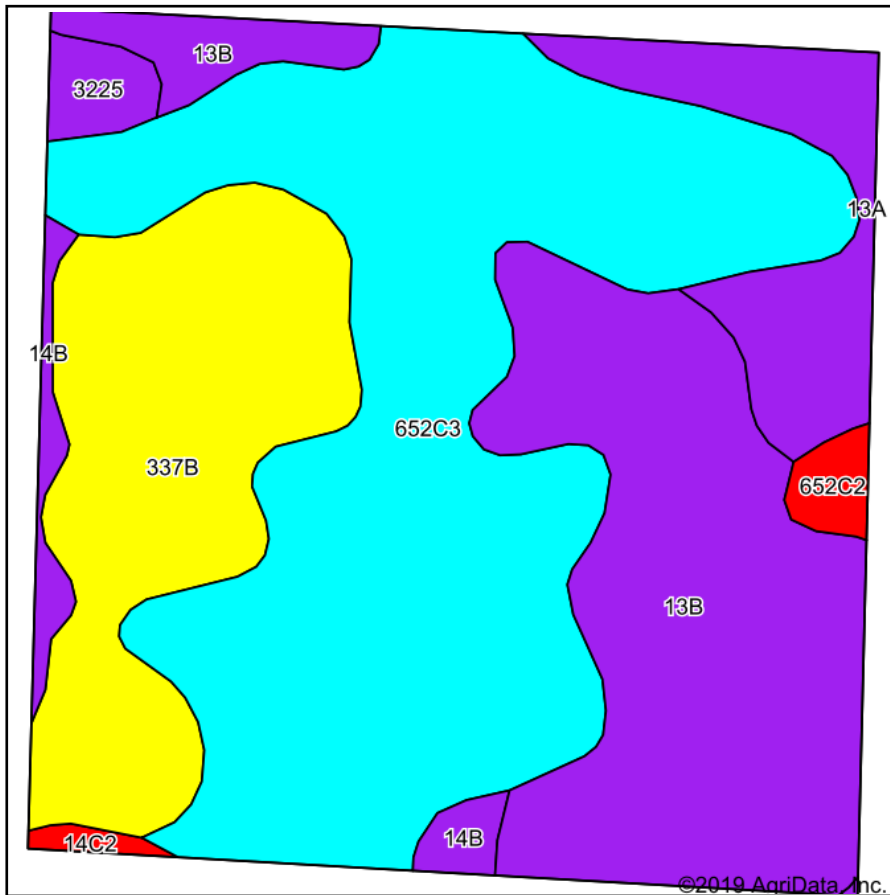
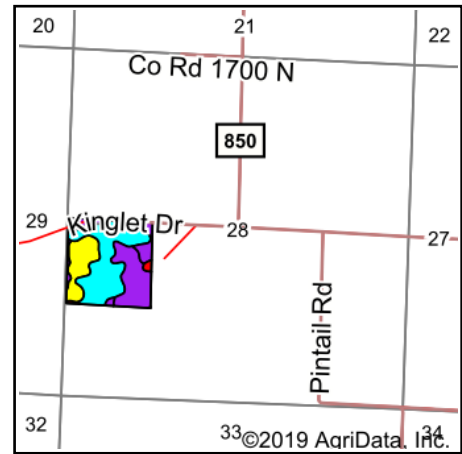


Soils Map



Soils data provided by USDA and NRCS.



State: **Illinois**
 County: **Clay**
 Location: **28-5N-6E**
 Township: **Blair**
 Acres: **40.29**
 Date: **11/7/2019**



Area Symbol: IL025, Soil Area Version: 14								
Code	Soil Description	Acres	Percent of field	Il. State Productivity Index Legend	Corn Bu/A	Soybeans Bu/A	Wheat Bu/A	Crop productivity index for optimum management
**652C3	Passport silty clay loam, 5 to 10 percent slopes, severely eroded	17.61	43.7%		**108	**36	**47	**82
**13B	Bluford silt loam, 2 to 5 percent slopes	10.40	25.8%		**135	**44	**54	**100
**337B	Creal silt loam, 2 to 5 percent slopes	7.42	18.4%		**149	**47	**58	**109
13A	Bluford silt loam, 0 to 2 percent slopes	2.89	7.2%		136	44	55	101
**14B	Ava silt loam, 2 to 5 percent slopes	0.83	2.1%		**134	**44	**54	**99
3225	Holton silt loam, frequently flooded	0.56	1.4%		135	43	50	100
**652C2	Passport silt loam, 5 to 10 percent slopes, eroded	0.41	1.0%		**116	**39	**51	**88
**14C2	Ava silt loam, 5 to 10 percent slopes, eroded	0.17	0.4%		**122	**40	**50	**90
Weighted Average					125.6	41	51.6	93.7

Table: Optimum Crop Productivity Ratings for Illinois Soil by K.R. Olson and J.M. Lang, Office of Research, ACES, University of Illinois at Champaign-Urbana. Version: 1/2/2012 Amended Table S2 B811

Crop yields and productivity indices for optimum management (B811) are maintained at the following NRES web site: <http://soilproductivity.nres.illinois.edu/>

** Indexes adjusted for slope and erosion according to Bulletin 811 Table S3

*c: Using Capabilities Class Dominant Condition Aggregation Method

Soils data provided by USDA and NRCS. Soils data provided by University of Illinois at Champaign-Urbana.